

August 1	: Commerce Day
August 21	: World Entrepreneurs Day
November 10	: International Accounting Day
November 15	: National Entrepreneurs Day
December 24	: National Consumers Day
<b>Department of Computer Applications</b>	
March 31	: World Backup Day
May 17	: World Information Day
Last Friday of July	: SysAdmin Day
September 2	: World Computer Literacy Day
September 12	: Programmes Day
November 30	: Computer Security Day
<b>Department of Business Administration</b>	
February 24	: Central Excise Day
April 26	: World Intellectual Property Day
November 3	: International Project Management Day
November 9	: Legal Services Day
December 24	: National Consumers Day
<b>Department of Electronics</b>	
February 28	: National Science Day
May 17	: World Telecom Day
October 14	: International E-Waste Day
November 10	: World Science Day for Peace & Development
November 29	: Electronics Greeting Day
<b>Department of Costume Design and Fashion</b>	
March 21	: International Colour Day
July 30	: World Embroidery Day
August 19	: International Bow Day
August 21	: World Fashion Day
October 7	: World Cotton Day
December 21	: World Saree Day
<b>Department of B.Com (PA)</b>	
January 26	: International Customs Day
February 12	: National Productivity Day
March 15	: World Consumer Rights Day
April 26	: World Intellectual Property Day
May 1	: International Labor Day
July 1	: National Chartered Accountant Day
July 7	: International Day of Cooperatives
September 27	: World Tourism Day
December 24	: National Consumer Day
<b>Department of Statistics</b>	
June 29	: National Statistics Day
October 20	: World Statistics Day
<b>Library</b>	
April 23	: World Book Day
June 19	: National Reading Day
August 12	: National Librarian's Day

# G.VENKATASWAMY NAIDU COLLEGE

An Autonomous Institution

(Reaccredited with "A" Grade by NAAC)

Affiliated to Manonmaniam Sundaranar University, Tirunelveli.

(Under the Management of the Kuppaswamy Naidu Charity Trust for  
Education and Medical Relief, Coimbatore-37)

**KOVILPATTI - 628 502**

Thoothukudi District

Ph : 04632 - 220389 (Aided) Cell : 83009 20389

Ph : 04632 - 225389 (SFC) Cell : 89030 20302



## HAND BOOK

&

## ACADEMIC CALENDAR

### 2024 - 2025

E-mail : [gvncollegeoffice@gvncollege.edu.in](mailto:gvncollegeoffice@gvncollege.edu.in)

[gvnscsfcoffice@gvncollege.edu.in](mailto:gvnscsfcoffice@gvncollege.edu.in)

Website : [www.gvncollege.org](http://www.gvncollege.org)

## PERSONAL MEMORANDA

Name.....

Programme & Branch..... Roll No.....

Address for Communication.....

..... Pincode .....

Phone ..... Mobile No.....

Date of Birth .....

Blood Group .....

Height ..... Weight.....

Mode of Conveyance.....

Name of the Father / Guardian.....

Father's Occupation.....

Name of the Mother.....

Mother's Occupation.....

Residential Address.....

Phone ..... Mobile No.....

E-mail ID.....

## IMPORTANT DAYS

### Department of Tamil:

.....  
.....  
.....

### Department of English:

March 21 : World Poetry Day  
March 27 : World Theatre Day / National Drama Day  
April 12 : DEAR Day (Drop Everything And Read)  
April 23 : National English Language Day (Shakespeare Birthday)

### Department of Mathematics:

February 7 : E-Day (Euler's Day)  
March 14 : Mathematics Pi Day  
May 12 : Women in Mathematics day  
October 23 : Mole Day  
December 22 : National Mathematics Day

### Department of Physics:

Feb 27 : World Sustainable Energy Day  
Feb 28 : National Science day  
October 15 : world student's day/ Dr.A.P.J.Abdulkalam birthday  
Nov 10 : International Science day  
Dec 14 : National Energy Conservation day

### Department of Chemistry:

February 11 : International Day of Women & Girls in Science  
February 28 : National Science Day  
October 17-23: National Chemistry Week  
October 23 : Mole Day  
November 7 : National Chemistry Day

### Department of Botany:

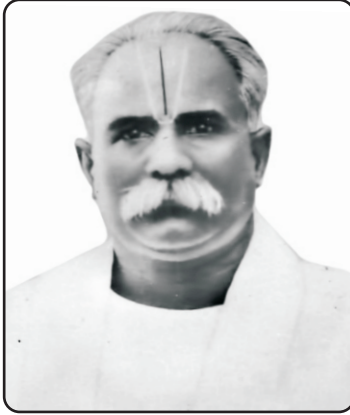
March 21 : World forest Day  
March 22 : World Water & Sanitation Day  
March 23 : World Resources Day  
April 10 : World Atmosphere Day  
April 22 : Earth Day  
May 08 : World Migratory Bird Day  
May 22 : World Biodiversity Day  
June 05 : World Environment Day  
July 01-07 : Van MahotasavSaptah  
July 11 : World Population Day  
September 16 : World Ozone Day  
October 02-08: Wildlife Week  
October 03 : World Nature Day  
October 06 : World Wildlife Day  
November 12 : World Birds Day  
November 14 : World Energy Conservation Day

### Department of Commerce:

January 25 : International Customs Duty Day  
March 15 : World Consumer Rights Day  
May 19 : National Accounting Day

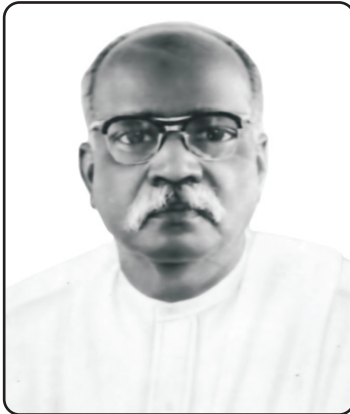


## Pioneers of GKNM Trust for Education and Medical Relief



Late. Sri. G. KUPPUSWAMY NAIDU  
(1884 - 1942)

(In Whose Name the Charity Trust is Founded)



Late. Sri. G. VENKATASWAMY NAIDU  
(1902 - 1972)

(In Whose Name the College is Founded)

Day	Date	Day Order	March - 2025	Working days in the month
Sat	1	-		-
Sun	2	-		-
Mon	3	II		1
Tue	4	III	Ayya Vaikundar Avatharitha Naal	2
Wed	5	IV		3
Thu	6	V		4
Fri	7	VI	HOD Meeting	5
Sat	8	I		6
Sun	9	-		-
Mon	10	II		7
Tue	11	III		8
Wed	12	IV		9
Thu	13	V		10
Fri	14	VI	Holi	11
Sat	15	-		-
Sun	16	-		-
Mon	17	I		12
Tue	18	II		13
Wed	19	III		14
Thu	20	IV	World Sparrow Day, College Annual Day - UnAided	15
Fri	21	V	World Forestry Day, College Annual Day - Aided	16
Sat	22	-		-
Sun	23	-		-
Mon	24	VI		17
Tue	25	I		18
Wed	26	II		19
Thu	27	III		20
Fri	28	IV		21
Sat	29	-		-
Sun	30	-	Telugu New Year / Ramzan	-
Mon	31	V	II - CIA Begins (Model Exam)	22
			Total	22
			<b>Progressive Total</b>	<b>61+22=83</b>

Day	Date	Day Order	Febrauary - 2025	Working days in the month
Sat	1	-		-
Sun	2	-		-
Mon	3	VI	HOD Meeting	1
Tue	4	I	World Cancer Day	2
Wed	5	II		3
Thu	6	III		4
Fri	7	IV		5
Sat	8	-		-
Sun	9	-		-
Mon	10	V	I - CIA Begins	6
Tue	11	-	Thaipusam	-
Wed	12	VI		7
Thu	13	I		8
Fri	14	II		9
Sat	15	III		10
Sun	16	-		-
Mon	17	IV	Last Date to Pay Even Semester Exam Fee	11
Tue	18	V		12
Wed	19	VI		13
Thu	20	I		14
Fri	21	II		15
Sat	22	-		-
Sun	23	-		-
Mon	24	III	Maasi Magam	16
Tue	25	IV		17
Wed	26	V	Maha Sivarathiri	18
Thu	27	VI		19
Fri	28	I	Last Date to Submit I CIA Marks to COE	20
			Total	20
			Progressive Total	41+20=61



**Sri. S. PATHY**  
Managing Trustee, Chairman



**Dr.P.Mahendran, Ph.D.,**  
Secretary



**Dr.M.Subbulakshmi, Ph.D.,**  
Principal i/c



**Dr.G.Venkadasalpathi, Ph.D.,**  
Director (SFC)

Day	Date	Day Order	January - 2025	Working days in the month
Wed	1	-	New Year	-
Thu	2	III		1
Fri	3	IV		2
Sat	4	V		3
Sun	5	-		-
Mon	6	VI	HOD Meeting	4
Tue	7	I		5
Wed	8	II		6
Thu	9	III		7
Fri	10	IV	Vaikunda Yegathasi	8
Sat	11	V	Samathuva Pongal Celebration	9
Sun	12	-		-
Mon	13	-	Boghi	-
Tue	14	-	Thai Pongal	-
Wed	15	-	Thiruvalluvar Day	-
Thu	16	-	Uzhavar Thirunal	-
Fri	17	VI		10
Sat	18	I		11
Sun	19	-		-
Mon	20	II		12
Tue	21	III		13
Wed	22	IV		14
Thu	23	V		15
Fri	24	VI		16
Sat	25	-	National Voters Day	-
Sun	26	-	Republic Day	-
Mon	27	I		17
Tue	28	II		18
Wed	29	III		19
Thu	30	IV		20
Fri	31	V		21
			Total	21
			<b>Progressive Total</b>	<b>20+21=41</b>

Day	Date	Day Order	December-2024	Working days in the month
Sun	1		World AIDS Day	-
Mon	2			-
Tue	3			-
Wed	4	I	College Reopening for Even Semester	1
Thu	5	II		2
Fri	6	III		3
Sat	7	-		-
Sun	8	-		-
Mon	9	IV		4
Tue	10	V		5
Wed	11	VI		6
Thu	12	I		7
Fri	13	II	Thirukarthigai	8
Sat	14	-		-
Sun	15	-		-
Mon	16	III		9
Tue	17	IV		10
Wed	18	V		11
Thu	19	VI		12
Fri	20	I	National Mathematics Day	13
Sat	21	II		14
Sun	22	-		-
Mon	23	III		15
Tue	24	IV		16
Wed	25	-	Christmas	-
Thu	26	V		17
Fri	27	VI		18
Sat	28	-		-
Sun	29	-		-
Mon	30	I		19
Tue	31	II	New Year Eve	20
			Total	20
			Progressive Total	20

**TIME TABLE**

**2024 -2025 Odd Semester**

Hour Day Order	1	2	3	4	5	6
I						
II						
III						
IV						
V						
VI						

**2024 - 2025 Even Semester**

Hour Day Order	1	2	3	4	5	6
I						
II						
III						
IV						
V						
VI						

## CONTENTS

S.I. No.	Contents	P.No.
1.	Profile of the College	1
2.	The Managing Body	6
3.	The College Committee	6
4.	List of Secretaries	7
5.	List of Principals	8
6.	Programmes Offered	9
7.	Department Mail IDs	10
8.	Fee Details (Aided)	11
9.	Teaching Staff (Aided)	12
10.	Non-Teaching Staff (Aided)	14
11.	Teaching Staff (Un Aided)	15
12.	Non-Teaching Staff (Un Aided)	18
13.	Statutory Bodies	19
14.	Convenors of Various Committee	22
15.	General Information	36
16.	Co-curricular and Extra-curricular Activities	54
17.	Academic Calendar 2024 - 2025	60
18.	Important Days	71

Day	Date	Day Order	November 2024	Working days in the month
Fri	1			
Sat	2			
Sun	3			
Mon	4		ESE Begins	
Tue	5			
Wed	6			
Thu	7		Soorasamharam	
Fri	8			
Sat	9			
Sun	10			
Mon	11			
Tue	12			
Wed	13			
Thu	14		Children's Day	
Fri	15			
Sat	16			
Sun	17			
Mon	18			
Tue	19			
Wed	20			
Thu	21			
Fri	22			
Sat	23			
Sun	24			
Mon	25			
Tue	26			
Wed	27			
Thu	28			
Fri	29			
Sat	30			
			Total	
			<b>Progressive Total</b>	



Day	Date	Day Order	October 2024	Working days in the month
Tue	1	VI		1
Wed	2	-	Gandhi Jayanthi	-
Thu	3	I	Odd Semester ESE Practical Begins	2
Fri	4	II		3
Sat	5	III		4
Sun	6	-		-
Mon	7	IV		5
Tue	8	V		6
Wed	9	VI		7
Thu	10	I	Saraswathi / AyuthaPooja Celebration	8
Fri	11	-	Saraswathi / AyuthaPooja	-
Sat	12	-	VijayaDhasami	-
Sun	13	-		-
Mon	14	II	Mahalaya Amavasya	9
Tue	15	III	World Student's Day	10
Wed	16	IV	II - CIA Begins (Model Exam)	11
Thu	17	V		12
Fri	18	VI		13
Sat	19	I		14
Sun	20	-		-
Mon	21	II		15
Tue	22	III		16
Wed	23	IV		17
Thu	24	V		18
Fri	25	VI		19
Sat	26	-		-
Sun	27	-		-
Mon	28	I	Last Date to Submit II CIA & Other Component Marks to COE	20
Tue	29	II	Last Working Day	21
Wed	30	-		-
Thu	31	-	Deepavali	-
			Total	21
			Progressive Total	71+21=92

## 1. PROFILE OF THE COLLEGE

### 1.1. The College : An Introduction

G. Venkataswamy Naidu College, Kovilpatti is an organ of the G. Kuppuswamy Naidu Charity Trust for Education and Medical Relief, Coimbatore. Shri. G. Kuppusamy Naidu was a businessman turned industrialist who wanted in his lifetime to establish a Trust for the welfare of women and children. His dream came true posthumously – thanks to G. Venkataswamy Naidu. Shri. G. Venkataswamy Naidu was the younger brother of Shri. G. Kuppusamy Naidu. Just as Lakshmana stood by his elder brother in all his trials and tribulations, Venkataswamy Naidu was the trusted lieutenant of his elder brother.

The trust was established on October 29, 1948. The trust set its eyes on two important avenues of social service: Education and Medical Relief. In 1966, an application was made to the State Government for the starting of a College at Kovilpatti. The Lakshmi Mills brought Lakshmi to Kovilpatti and

G. Venkataswamy Naidu College brought Saraswathi to the area. Since there was no College within a sixty Kilometer radius of Kovilpatti town, the starting of this College was helpful to the students passing out of about twenty Schools in and around Kovilpatti.

The College was formally inaugurated on July 17th 1966 by honourable M. Bakthavatsalam, the Chief Minister of Madras with Professor T.P. Meenakshi Sundaranar, the

Vice-Chancellor of the affiliating Madurai University on the chair. Since then, the college has become a vibrant place and one of the premier institutions in Kovilpatti. In view of the successful growth of the College, the management decided to start Career Oriented Courses in the year 1994 under unaided stream. Over the period of 5 decades, through the sustained efforts and dedicated leadership of the College Management Committee, the college was able to scale greater and greater heights and rose to the present status of multi faculty institution with 15 UG courses and 6 PG courses, and 2 Research programmes by promoting quality and excellence in higher education.

The college spans over a total area of 72 acres with a sprawling coverage of Flora and Fauna on the Kovilpatti – Rajapalayam road, about 5 kms from Kovilpatti town. The college has smart classrooms well equipped laboratories, centralized library and Department libraries, Seminar Halls, Language Lab and Auditorium, Gymnasium, Facilities for Indoor Games and Playgrounds for Outdoor games & Sports. Rest rooms for women's students, Disability resource centre is also active for serving physically challenging students. It aims to spread quality education, fostering excellence in research by promoting academic inquiry. The college was accredited with B++ grade by NAAC in 2007 and Reaccredited with 'A' grade in 2015 and has an Internal Quality Assurance Cell that insists on collaborative excellence to inculcate multi-faceted personality development.

Employability, along with academic excellence, is the focal point of the institution. The Career Guidance and

Day	Date	Day Order	September 2024	Working days in the month
Sun	1	-		-
Mon	2	IV		1
Tue	3	V	HOD Meeting	2
Wed	4	VI		3
Thu	5	I	Teacher's Day	4
Fri	6	II	Last Date to Submit I CIA Marks to COE	5
Sat	7	-	Vinayagar Chaturuthi	-
Sun	8	-		-
Mon	9	III		6
Tue	10	IV		7
Wed	11	V	Last Date for Payment of Odd Semester Exam Fee	8
Thu	12	VI		9
Fri	13	I		10
Sat	14	-		-
Sun	15	-	Miladi Nabi / World Ozone Day	-
Mon	16	-		-
Tue	17	II		11
Wed	18	III		12
Thu	19	IV		13
Fri	20	V		14
Sat	21	-		-
Sun	22	-		-
Mon	23	VI		15
Tue	24	I		16
Wed	25	II		17
Thu	26	III		18
Fri	27	IV		19
Sat	28	-		-
Sun	29	-		-
Mon	30	V		20
			Total	20
			<b>Progressive Total</b>	<b>51+20=71</b>

Day	Date	Day Order	August 2024	Working days in the month
Thu	1	I	World Breast Feeding Week	1
Fri	2	II		2
Sat	3	-	Aadi Perukku	-
Sun	4	-	Friendship Day	-
Mon	5	III	Our Lady of Snows Basilica's Festival	3
Tue	6	IV		4
Wed	7	V	Aadi Pooram	5
Thu	8	VI		6
Fri	9	I	HOD Meeting	7
Sat	10	-		-
Sun	11	-		-
Mon	12	II	Founder's Day	8
Tue	13	III		9
Wed	14	IV		10
Thu	15	-	Independence Day	-
Fri	16	V		11
Sat	17	-		-
Sun	18	-		-
Mon	19	VI	I - CIA Begins / RakshaBandhan	12
Tue	20	I		13
Wed	21	II		14
Thu	22	III		15
Fri	23	IV		16
Sat	24	V		17
Sun	25	-		-
Mon	26	-	Krishna Jeyanthi	-
Tue	27	VI		18
Wed	28	I		19
Thu	29	II		20
Fri	30	III		21
Sat	31	-		-
			Total	21
			<b>Progressive Total</b>	<b>21+30=51</b>

placement Cell organizes training programmes and arranges campus interviews. Students were encouraged to take part in State and national level competitions.

Every year a considerable number of students were selected to various jobs through campus interviews. The College has been giving due encouragement and fullest support to extracurricular activities like NCC, NSS, Sports, Youth Red Cross, Consumer Club, Fine Arts and Red Ribbon Club etc. The College organizes extension activities like eye testing camp, Blood donation camp for the benefit of rural population around our College. The College holds a list of Blood donors to meet the emergency needs from nearby hospitals as well. Our College Library has a three tier library system with modern e-resources enabling an important source of learning in the College.

Our College is a member of INFLIBNET consortium which provides free-access to a large number of e-journals and e-books. Apart from these, National level Seminars and Workshops have been organized in the college premises, to provide a meaningful forum for the experts from all parts of the country for dissemination of knowledge and exchange of information in their field. Our College was granted autonomy by UGC in July 2020 yet another milestone in the History of the college and Department of Biotechnology Ministry of Science and Technology, Government of India sanctioned Star College grant to our college. The College dedicates itself to provide the highest quality education to the students to inspire them to lead happy and honorable life in the contemporary competitive society. Our students are well placed in various fields in India and abroad.

## 1.2. Vision of the College

- ✍ To promote knowledge acquisition.
- ✍ To develop the total personality of the students.
- ✍ To equip them for better service towards society.

## 1.3. Mission of the College

- ✍ Providing quality and need-based education to rural students.
- ✍ Imparting knowledge for holistic development by including social orientation and ethics.
- ✍ Developing innovation in various dimensions of teaching, learning, and research.
- ✍ Instilling scientific zeal, leadership, and employable skills in students to meet contemporary challenges.
- ✍ Making the students self-reliant.

## 1.4. The College Motto

“எண்ணும் எழுத்தும் கண்” is our Motto.

“எண்” stands for the study of science.

“கண்” stands for the liberal arts.

Day	Date	Day Order	July 2024	Working days in the month
Mon	1	III	GST Day	1
Tue	2	IV		2
Wed	3	V		3
Thu	4	VI		4
Fri	5	I	HOD Meeting	5
Sat	6	-		-
Sun	7	-		-
Mon	8	II		6
Tue	9	III		7
Wed	10	IV		8
Thu	11	V		9
Fri	12	VI		10
Sat	13	-		-
Sun	14	-		-
Mon	15	I		11
Tue	16	II		12
Wed	17	-	Muharram	-
Thu	18	III		13
Fri	19	IV		14
Sat	20	-		-
Sun	21	-	Guru Purnima	-
Mon	22	V		15
Tue	23	VI		16
Wed	24	I	Kargil Vijay Diwas	17
Thu	25	II		18
Fri	26	III		19
Sat	27	-		-
Sun	28	-	World Nature Conversation Day	-
Mon	29	IV	International Tiger Day	20
Tue	30	V		21
Wed	31	VI		22
			Total	22
			Progressive Total	8+22=30

Day	Date	Day Order	June 2024	Working days in the month
Sat	1			
Sun	2			
Mon	3			
Tue	4			
Wed	5		World Environment Day	
Thu	6			
Fri	7			
Sat	8			
Sun	9			
Mon	10			
Tue	11			
Wed	12			
Thu	13			
Fri	14			
Sat	15			
Sun	16			
Mon	17		Bakrid	
Tue	18			
Wed	19	I	All UG & II PG Classes Starts	1
Thu	20	II		2
Fri	21	III	International Yoga Day	3
Sat	22	-		-
Sun	23	-	World Father's Day	-
Mon	24	IV		4
Tue	25	V		5
Wed	26	VI		6
Thu	27	I		7
Fri	28	II		8
Sat	29	-	National Statistics Day	-
Sun	30	-		-
			Total	8
			Progressive Total	8

## 1.5. The College Crest

### (a) Symbolical Representation



Lakshmi: Growth and development of higher education.

The Five Flames of the Lamp: Perception of Knowledge through the Five Senses.

The Stool with the Book Stand: Remembrance of Great Tamil Pulavars and Saints.

Open Book: Life itself is an Open Book

Outer Shape of Lotus: Prosperity and the delight resulting from it.

### (a) Colour Scheme of the Crest

- ✍ The gilded figure of Lakshmi shows that it is "PONMAGAL," the symbol of opulence and wealth.
- ✍ The Saffron Colour is intended here to represent this ancient and's rich culture, heritage, and spirit of sacrifice.
- ✍ The Blue Colour represents the spirit of the international brotherhood of Tamil culture.

## 2. THE MANAGING BODY

Name of the College : G.VENKATASWAMY NAIDU COLLEGE  
with full postal (Autonomous), Kovilpatti - 628 502.  
Address Thoothukudi District.  
Name of the  
Educational Agency :The Kuppaswamy Naidu Charity Trust for  
Education and Medical Relief,  
Coimbatore - 641 037.  
President : Sri. S. Pathy  
Vice-President : Sri. R. Gopinath  
Trustees : Sri. R. Jagadish Chandran  
Sri. Vijay Mohan  
Dr. Jairam Varadaraj  
Sri. Sanjay Jayavarthanavelu  
Sri. Aditya Krishna Pathy

## 3. THE COLLEGE COMMITTEE

President : **Sri. S. Pathy**  
Chairman & Managing Director,  
The Lakshmi Mills Company Ltd.,  
Avinashi Road, Coimbatore - 641 037.  
Members : **Sri. R. Gopinath**  
411/412, Manchester Regent,  
1094, Avinashi Road, Coimbatore - 641 037.  
**Sri. Sanjay Jayavarthanavelu**  
Lakshmi Machine Works Ltd.,  
34A, Kamarajar Road, Coimbatore - 641 018.

# 19. ACADEMIC CALENDAR

## 2024 - 2025



scholarly articles, poetry, artwork, and reflections on campus life. It serves as a vibrant testament to our community's achievements and aspirations.

### 17.17 GVNC JISRS (Journal of Inventive and Scientific Research Studies)

JISRS is a double-blind peer reviewed academic research journal envisioned as a refereed international online publication. The journal aims to be a platform for diverse intellectual and educational pursuit from all corners of the society to enrich the learning experience of the readers. JISRS publishes original ideas of empirical and research papers and serves as a forum for all the academicians, research scholars, scientists and to the industry people to share their views and to publish their scholarly papers.

**Website :www.jisrs.com**

### 17.18 Staff Club

The Staff Club is formed to maintain cordial relationships among faculty members and to provide a warm relationship between them and administrative staff members.

### 17.19 Parent-Teacher Association (PTA)

The association's main objective is to act as a bridge between parents and teachers. Through frequent meetings, parents and teachers are closely associated with the overall development of academics and the discipline of their wards. Office Bearers of this association include the President, Vice President, Secretary, Joint Secretary, and Treasurer. They devise Financial Schemes for the welfare of needy students.

### Sri. Aditya Krishna Pathy

Deputy Managing Director,  
Lakshmi Mills Co Ltd.,  
Coimbatore - 641 037

### Sri. S. Balachandran

Secretary,  
The Kuppaswamy Naidu Charity Trust for  
Education and Medical Relief,  
Coimbatore - 641 037.

- Secretary : **Dr. P. Mahendran, Ph.D.**  
G.Venkataswamy Naidu College (A),  
Kovilpatti - 628 502.
- University Representative : **Dr. R. Selvaraju, Ph.D.,**  
Associate Professor of Education,  
Manonmaniam Sundaranar University,  
Tirunelveli - 627 012.
- Ex - Officio : **Dr. M. Subbulakshmi, Ph.D.**  
Principal i/c  
G.Venkataswamy Naidu College (A),  
Kovilpatti - 628 502.
- Ex - Officio : **Dr. A.Pandiarani, Ph.D.**  
Associate Professor of Mathematics,  
G.Venkataswamy Naidu College (A),  
Kovilpatti - 628 502.
- Ex – Officio : **Mrs. R. Maheswari, M.A.,**  
Office Superintendent,  
G.Venkataswamy Naidu College (A),  
Kovilpatti - 628 502.

### 4. SUCCESSION LIST OF SECRETARIES

S. No.	NAME	YEARS
1.	Sri. V. Jagannathan	June 1966 - 06.07.1976
2.	Sri. K. Selvaraj	07.07.1976 - 17.05.2019
3.	Dr. P. Mahendran, Ph.D.	18.05.2019 - Till Date



## 5. SUCCESSION LIST OF PRINCIPALS

1.	Prof. A. S. Narayanasamy Naidu	Principal	30.06.1966 - 29.06.1971
2.	Prof. S. Dhas	Principal (i/c)	30.06.1971 - 31.08.1971
3.	Capt. N. Devarajan	Principal	01.09.1971 - 19.02.1979
4.	Prof. T. N. Kripendra Babu	Principal (i/c)	20.02.1979 - 31.05.1988
5.	Dr. M. Sankaran Kutty Menon	Principal (i/c) Principal	01.06.1988 - 20.07.1988 21.07.1988 - 31.05.1991
6.	Prof. R. Sethuraman	Principal (i/c) Principal	01.06.1991 - 25.06.1991 26.06.1991 - 31.05.1994
7.	Prof. R. Venkatasamy	Principal (i/c) Principal	01.06.1994 - 24.07.1994 25.07.1994 - 31.05.1998
8.	Prof. V. Rajunarayanan	Principal	01.06.1998 - 30.06.2000
9.	Prof. A. Ramachandran	Principal (i/c) Principal	01.07.2000 - 24.01.2001 25.01.2001 - 31.05.2002
10.	Prof. A. Chennakesavan	Principal (i/c) Principal	01.06.2002 - 18.07.2004 19.07.2004 - 31.05.2007
11.	Prof. K. Kumarasamy	Principal (i/c) Principal	01.06.2007 - 29.08.2007 30.08.2007 - 31.05.2009
12.	Prof. T. R. Thiruvengadaraj	Principal (i/c)	01.06.2009 - 02.12.2010
13.	Dr. G. Mariappan Under the Management Scheme	Principal Principal	03.12.2010 - 31.05.2016 01.06.2016 - 31.03.2017
14.	Mrs. G. Adhilakshmi	Principal (i/c)	01.04.2017 - 31.05.2017
15.	Dr. S. Krishnasamy	Principal (i/c)	01.06.2017 - 31.05.2019
16.	Dr. N.R.Santhi Maheswari	Principal (i/c)	01.06.2019 - 30.04.2023
17.	Dr. M.Subbulakshmi	Principal (i/c)	01.05.2023 - Till Date

## 17.13 Department Associations

The department associations conduct Lectures, Seminars, Symposiums, Workshops, Discussions, Debates, Quizzes, Paper presentations, and several competitions to develop the students' skills in their respective fields of study. The students are also encouraged to participate in competitions in neighbouring colleges and other organizations. Industrial Visits and In-plant Training are also regularly arranged for the students.

## 17.14. Alumni Association

The Alumni Association of GVN College provides a vibrant global network and forum that connects all alumni with GVN College. In addition, the College connects alumni with currently enrolled students to provide opportunities for their interpersonal and professional growth and development. The alumni of GVN College bounteously contribute funds and books for the student's development.

## 17.15 Tamil Mandram

The Tamil Mandram conducts various activities for the students and encourages them to become skilled Tamil orators and writers. The students' manuscripts are collected and published in 'Suvadugal,' a popular Tamil Magazine of G.V.N. College. This develops students' creative writing in different genres, viz., novels, short stories, prose, poetry, and other branches.

## 17.16 GVNC Phoenix

Phoenix, GVN College's annual magazine, epitomizes our institution's spirit of creativity and academic excellence. It features a rich tapestry of student and faculty contributions, scholarly



### 17.7 English Club

The English Club provides opportunities for students of rural backgrounds to develop their communication skills and showcase their talents. The club regularly organizes a career guidance program, attitude-building activities, and task-based activities to build the students' language skills.

### 17.8 Junior Jaycee Wing

The Junior Jaycee Wing promotes leadership and entrepreneurial qualities among the student community. It organizes self-development programmes on Team building, Motivation, Stress Management, Attitude, and Goal Setting.

### 17.9 Blood Donors Club / Health Club

The Blood Donors Club has been performing Praiseworthy service and has saved many valuable lives by donating blood. Service to humanity is the club's motto.

### 17.10 Quiz Club

The GVN College Quiz Club plays a vital role in identifying students' talent in quizzes and creating opportunities for them to sharpen their wits. The final-year students are members of the Quiz Club. Intra-collegiate quiz competitions are conducted every week.

### 17.11 Sports Club

The Role of the Sports Club is to bring out the professional and sports disciplines in Football, Shuttle, Badminton, Cricket, Volleyball, Track Events, and Athletics. An eclectic collection of competitive, recreational, and instructional athletic programs are available through the club. The teams and athletes belonging to the club compete in several leagues, championships and tournaments.

### 17.12 Nature Club

Nature Club helps students understand the need for environmental conservation and convert them into nature lovers. The club regularly organizes Field trips, Exhibitions on Environment, Cleanliness Programmes, Awareness camps, and seminars to encourage students to be responsible citizens.

## 6. PROGRAMMES OFFERED

AIDED STREAM			
Program	Branch	Year of Affiliation	Sanctioned strength
B.Sc.	Mathematics	1967-68	48
B.Sc.	Physics	1972-73	48
B.Sc.	Chemistry	1972-73	48
B.Sc.	Botany	1972-73	48
B.Com.	Commerce	1972-73	64
M.Sc.	Mathematics	1989-90	25
Ph.D.	Mathematics	2018-19	28
UNAIDED STREAM			
B.Sc.	Computer Science	1994-1995	48
B.B.A.	Business Administration	1995-1996	64
B.Sc.	Electronics	1996-1997	48
B.Sc.	Costume Design & Fashion	1998-1999	48
M.Sc.	Computer Science	2001-2002	25
M.Sc.	Information Technology	2002-2003	25
M.Com.	Commerce	2006-2007	30
B.Sc.	Information Technology	2008-2009	48
B.Com.	Commerce	2008-2009	64
B.A.	English	2011-2012	64
B.Sc.	Statistics	2014-2015	48
M.A.	English	2014-2015	30
B.Com.(PA)	Professional Accounting	2017-2018	64
Ph.D.	Commerce	2018-2019	12
M.Sc.	Botany	2020-2021	25
B.C.A	Computer Application	2021-2022	48
B.Com.BA	Business Analytics	2021-2022	64

## 7. Department Mail IDs

### Aided

Tamil	gvntamil@gvncollege.edu.in
English	gvncenglish@gvncollege.edu.in
Mathematics	gvnmathsresearchdept@gvncollege.edu.in
Physics	gvnphysics@gvncollege.edu.in
Chemistry	chemistrygvn@gvncollege.edu.in
Botany	gvnbotany@gvncollege.edu.in
Zoology	zoologygvn@gvncollege.edu.in
Commerce	gvncommerce@gvncollege.edu.in

### UnAided

Tamil	gvncsfctamil@gvncollege.edu.in
English	preciousgvnelit@gvncollege.edu.in
Comp.Sci.	compsc@gvncollege.edu.in
BBA	bbabass2013@gvncollege.edu.in
Electronics	electronics@gvncollege.edu.in
CD&F	gvncdf@gvncollege.edu.in
IT	gvncitdept@gvncollege.edu.in
B.Com.,	comgvn@gvncollege.edu.in
B.Com. PA	bcompa@gvncollege.edu.in
Statistics	gvnstat@gvncollege.edu.in
BCA	gvnbca@gvncollege.edu.in
B.Com. BA	gvnanalytics@gvncollege.edu.in
Library	gvnlibrarysfc@gvncollege.edu.in

## 17.3 Training Centre for Uniform Service

College Provides Free Training to All Those who are Interested in Joining Uniform Service Jobs Such as Army, CRPF, BSF, Territorial Army, Industrial Security Forces & Tamilnadu Police Services.

The NCC Officer and Physical Directors of both Aided & UnAided Coordinate the above program.

Students are advised to approach the coordinators.

## 17.4 College Social Responsibility Scheme (CSRS)

G. Venkataswamy Naidu College's Social Responsibility Scheme (CSRS) embodies the institution's commitment to education that extends beyond the classroom, emphasizing the development of socially responsible individuals. By actively engaging students, faculty, and staff in various community initiatives, the CSRS aims to positively impact society, foster ethical responsibility, and bridge the gap between the college and the community it serves. This holistic approach to education benefits the local and broader community. It nurtures a sense of empathy, compassion, and a commitment to making a meaningful difference, ultimately shaping responsible global citizens.

## 17.5 Fine Arts Club

The Fine Arts Club functions very effectively in the college. The club aims to train and develop the students' innate talents and encourage them to participate in intercollegiate and inter-university cultural competitions and youth festivals.

## 17.6 Youth Red Cross

The Youth Red Cross has been instrumental in organizing various activities related to social concern, health awareness, and other emergency needs.

## 17. CO-CURRICULAR AND EXTRA - CURRICULAR ACTIVITIES

The College provides students with a wide range of Co-curricular and Extra-curricular activities to make their campus life interesting and develop them into extra-talented personalities.

Our college's extension activities link the college and the community. Extension activity has always been an integral part of our curriculum. The college has organized society-friendly programmes, awareness programmes on health and hygiene, and social and political awakening to bring girls from their homes and provide them with general education, which is a stupendous task. Our education / research / extension is based upon basic human values to help individuals and families lead successful lives in society.

### 17.1 National Service Scheme

The NSS units of our college have been lauded as the best units of Manonmaniam Sundaranar University. Since their inception, they have executed a remarkable service for society's welfare. The NSS units regularly organize special camps in villages, campus cleaning programs, observing the anti-drug day, tree planting programs, first aid training programs, global warming awareness, environmental programs, and so on.

Unit 51&52 for Aided Programmes and Unit 180 for Un Aided Programmes.

### 17.2 NATIONAL CADET CORPS

The NCC unit of our college provides opportunities to the youth of the country for their all-around development with a sense of duty, commitment, dedication, discipline, and moral values so that they can become leaders and useful citizens. The NCC unit provides exposure to the cadets in a wide range of activities, with a distinct emphasis on Social Services, Discipline and Adventure Training.

## 8. FEE DETAILS (Aided Stream)

Courses	Tuition fees per semester	Laboratory Fee for each Science Subject		Special Fees
	Rs.	Major	Allied Subject	
		Rs.	Rs.	Rs.
B.Sc. Maths	-	-	Chemistry 50	226
B.Sc. Physics	-	80	Zoology 50	226
B.Sc. Chemistry	-	100	Physics 40	226
B.Sc. PB & PBT	-	75	-	226
B.Com.	-	-	-	226
M.Sc. Maths	750	-	-	226

### A. DETAILS OF SPECIAL FEES

Sl. No.	Name of Fee	Amount	
		Rs.	Ps.
1.	Medical Inspection Fee	1	00
2.	Library and Reading Room Fee	15	00
3.	Games Fee	100	00
4.	College Day Fee	10	00
5.	Stationery Fee	50	00
6.	College Calendar Fee	10	00
7.	Magazine Fee	10	00
8.	Audio Visual Education Fee	2	00
9.	Social Service League & World University Fee	3	00
10.	Student's Aid Fund	3	00
11.	Campus Amenity Fee	10	00
12.	Students Service Fee	2	00
13.	Corpus Fund	10	00

### B. OTHER FEES

Sl. No.	Name of Fee	Amount	
		Rs.	Ps.
<b>Non - Salary Fees</b>			
1.	Certificate Verification Fee	50	00
2.	Admission	5	00
3.	National Flag	5	00
4.	Red Cross Society	20	00
<b>University Fees</b>			
1.	University Entrance Fee	100	00
2.	University Recognition Fee	100	00
3.	Fee for Recognition of Examination Passed (Only for those who come from C.B.S.E. & other University areas)	200	00
4.	Change of Language - (Hindi)	100	00



### **Facility to Reappear in an Examination / Examinations Already Passed**

Candidates who have passed in Examination / Examinations of UG/PG programmes may be permitted to appear again (only once) for the End Semester Examination with a view to improve their attainments, if they do not show improvement, their previous results shall hold good. Such candidates shall not apply for their degree certificates in the convocations held in between. Also such reappearances shall be made at the examination(s) conducted in the College in the next two semesters.

### **System of "Transparency in Examination"**

✍ In this system, 'Photo Copies' of evaluated answer scripts will be furnished to the students on their request.

✍ Students can apply by remitting the fee prescribed per answer scripts.

✍ Students who applied for, will be called and the Photo copies of evaluated answer scripts will be issued to the students. Students shall scrutinize the same.

✍ Subject experts will clear the doubts if any.

✍ After scrutiny, if they want their scripts to be revalued they shall apply for the same within 3 calendar days.

### **Provisional Certificate**

✍ The Manonmaniam Sundaranar University, Tirunelveli is the authority to issue Provisional Certificates to the candidates who have completed their respective programmes at our College.

✍ The College will send the results particulars of students who have qualified for award of Degrees to the Manonmaniam Sundaranar University along with the prescribed fees, to get Provisional Certificates.

✍ Students do not need to apply to the university directly to get provisional certificates. However, for a duplicate provisional certificate, students should approach the university directly.

✍ The candidates shall collect their Provisional Certificates from the CoE office directly, as and when they are received from the Manonmaniam Sundaranar University.

Name	Designation
<b><u>Department of Physics</u></b>	
<b>Dr.P.Chithralekha</b> , M.Sc., M.Phil., Ph.D.	Assistant Professor & HoD
<b>Mrs.R.Kavitha Manju</b> , M.Sc., M.Phil., Ph.D.	Assistant Professor
<b>Mrs.K.Renukadevi</b> , M.Sc., M.Phil., B.Ed., Ph.D.	Assistant Professor
<b><u>(Self Supporting)</u></b>	
<b>Mr.G.Angumalar</b> , M.Sc., B.Ed., Ph.D.,	Assistant Professor
<b>Mr.K.Velmurugan</b> , M.Sc., M.Phil., Ph.D.,	Assistant Professor
<b>Ms.S.Deva Dharshini</b> , M.Sc.,	Assistant Professor
<b><u>Department of Chemistry</u></b>	
<b>Dr.B.Umadevi</b> , M.Sc., M.Phil., Ph.D.,	Associate Professor & HoD
<b>Mr.R.Venkatesan</b> , M.Sc., SLET, NET, GATE., Ph.D.,	Associate Professor
<b>Dr.V.Gomathi Sankareswari</b> , M.Sc., M.Phil., Ph.D.,	Associate Professor
<b>Mrs.P.Yogalakshmi</b> , M.Sc., M.Phil., B.Ed., Ph.D.,	Assistant Professor
<b><u>(Self Supporting)</u></b>	
<b>Dr.M.Sivakavinesan</b> , M.Sc., (Che)M.Sc., (Env. Bio Tech)Ph.D.,	Assistant Professor
<b>Dr.D.James balagan Anand</b> , M.Sc., M.Phil., Ph.D.,	Assistant Professor
<b><u>Department of Botany</u></b>	
<b>Dr.B.Makesh Kumar</b> , M.Sc., M.Phil., Ph.D.	Associate Professor & HoD
<b><u>(Self Supporting)</u></b>	
<b>Dr.K.Marisamy</b> , M.Sc., Ph.D.,	Assistant Professor
<b>Dr.R.Lakshmanan</b> , M.Sc., Ph.D.,	Assistant Professor
<b>Dr.T.Amutha Priya</b> , M.Sc., Ph.D.,	Assistant Professor
<b><u>Department of Zoology (Self Supporting)</u></b>	
<b>Dr.R.Sonia</b> , M.Sc., B.Ed., Ph.D.,	Assistant Professor
<b><u>Department of Physical Education</u></b>	
<b>Dr.T.Kothaiammal</b> , B.Sc., M.P.Ed., M.Phil., Ph.D.,	Directress of Physical Edu.
<b><u>Department of Commerce (Self Supporting)</u></b>	
<b>Dr.A.Revathi</b> , M.Com., M.Phil., Ph.D.,	Assistant Professor & HOD i/c
<b>Mr.E.Selvakumar</b> , M.Com(CA), M.Phil., Ph.D.,	Assistant Professor
<b>Dr.S.Vinayasree</b> , M.Com., M.B.A., M.Phil., Ph.D.,	Assistant Professor
<b>Mrs.D.Rani</b> , M.Com., M.Phil.,	Assistant Professor



## 10. NON - TEACHING STAFF (AIDED)

Name	Designation
<b>Mrs.R.Maheswari</b> , M.A.,	Office Superintendent
<b>Mr.N.Ramamoorthi</b>	Junior Assistant (Sel. Gr)
<b>Mr.P. Ponraj</b> , Steno	Typist (Sel.Gr)
<b>Mrs.M.Jayanthi</b> , M.Com., DCS.	Lab. Assistant (Sel. Gr)
<b>Mr.A.V.V.Marichamy</b>	Lab. Assistant (Sel. Gr)
<b>Dr.S.Bala</b> , M.Com., M.L.I.S., M.Phil., Ph.D.	Lab. Assistant (Sel. Gr)
<b>Mr.E.Parasuraman</b> , B.A.	Lab. Assistant (Sel. Gr)
<u>(Self Supporting)</u>	
<b>Mrs.J.Akila</b> , B.C.A.	Junior Assistant
<b>Mr.M.Muthukumar</b> , B.Sc.,(Elec) TTC.,	Junior Assistant
<b>Mrs.R.Padma</b>	Lab. Assistant
<b>Ms.V.Sutha</b> , M.Com., PGDCA	Junior Assistant
<b>Ms.K.Gowsalya</b> M.Sc.,	Lab. Assistant
<b>Mrs.A.Mahalakshmi</b> , M.Sc.,	Lab. Assistant
<b>Mrs.V.Ahila</b> , B.C.A.	Lab. Assistant
<b>Mrs.A. Benitta</b> , B.Sc.,	Lab. Assistant
<b>Mr.R.Ranjith kumar</b>	Electrician
<b>Mrs.G.Harini</b> , B.Sc.,IT	Record Clerk
<b>Mrs.P.Thangamariammal</b>	Office Assistant
<b>Mr.C.Selva kumar</b>	Office Assistant
<b>Mr.K.Arjunan</b>	Watchman
<b>Mr.M.Perumal</b>	Sweeper
<b>Mr.M.Marikannan</b>	Sweeper
<b>Mrs.M.Selvi</b>	Sweeper
<b>Mrs.K.Mallika</b>	Sweeper
<b>Mrs. M. Muthulakshmi</b>	Gardener
<b>Mrs. V. Jeya</b>	Sweeper
<b>Mr. S. Madasamy</b>	Gardener
<b>Mr. V. Ayyanar</b>	Scavenger

## NOTES:

✍ The matter regarding the malpractice will be placed before the Examination Committee for enquiry and decision of the Committee shall be final.

✍ Cancellation of one or more papers written by the candidate who was found guilty of committing malpractice, will be indicated as Zero (0) against the title of the respective course in the statement of marks.

✍ If a candidate is reported to have committed any malpractice for a second time, the Disciplinary Action Committee will enhance the punishment suitably. The above regulations are intended only

✍ The above regulations are intended only to guide the Committee in taking appropriate actions and not intended to apply mechanically to cover every conceivable case.

The Disciplinary Action Committee may suitably deal with any other case of malpractice which is not covered under any of the above clauses, considering cognizance (seriousness) of the case.

Penalty of Rs.500/- will be levied from each candidate who was found guilty of committing malpractice, to meet out the expenditure towards conduct of enquiry proceedings.

### Provision to Retotal the Answer Scripts

Students who are desirous of having their answer scripts retotalled shall download the prescribed form and apply to the Controller of Examinations, remitting the fee prescribed per answer scripts. Where the marks obtained in retotaling are higher than the marks awarded earlier, the Controller of Examinations will issue the revised mark sheet after withdrawing the previous one.

### Provision to Apply for Revaluation

Candidates who are desirous of having their answer scripts revalued shall download the form and apply to the Controller of Examinations, remitting the fee prescribed per answer scripts. Where the marks awarded in the revaluation are higher than the marks awarded earlier, the Controller of Examinations will issue the revised mark sheet after withdrawing the previous one.

The following punishments will be given to the students, when they indulge in malpractices in C.I.A., Model. Practical and End Semester Examinations.

Category	Action
1. Possession of notes, books, bits or any incriminating material but not attempted to copy.	The Particular examination will be cancelled.
2. $\frac{3}{4}$ Candidate found in possession of mobile phone / electronic gadgets or the material written in the form of printed / Xeroxed / hand written on paper, cloth, scale, furniture etc., but not found to have copied from the material. $\frac{3}{4}$ Candidates leaving the hall within half an hour from the commencement of examination, with or without question / answer paper. $\frac{3}{4}$ Candidates being abetted by the another candidate but not in possession of any incriminating materials / and not made use of it in the examinations.	The Particular paper and the subsequent papers will be cancelled including supplementary and additional subjects. However the result of the examinations written prior to that date of malpractice will be published.
3. $\frac{3}{4}$ Candidates found copying from the mobile phone / electronic gadgets or other incriminating materials owned or written on hand etc, or borrowed in the form of printed/ xeroxed / handwritten or in any other means ie. Written on paper, cloth, scale, furniture or answer book of another candidate etc. $\frac{3}{4}$ Candidate knocking away his / her own or any other candidates answer scripts from the table.	The particular examination taken by the candidate and the examinations taken prior to the date of malpractice stand cancelled and he/she will not be permitted to write the rest of the examinations, if any, in that semester, including supplementary / additional subjects of examinations.
4. $\frac{3}{4}$ Inserting previously written answer sheets brought from outside, aiding or assisting for copying from additional book pilfered already or passing on written bits for copying. $\frac{3}{4}$ Candidate refusing to accompany the Hall Superintendent or to the Principal on account of his / her malpractice of exhibiting verbal resistance inside or outside the examination hall or running out of the hall with or without the answer paper or script. $\frac{3}{4}$ Candidate knocking away the question or answer papers from the Chief Superintendent / Hall Superintendent or any other official who possesses them. $\frac{3}{4}$ Candidate employing somebody to write examinations in his/her place (case of impersonation). $\frac{3}{4}$ Candidate threatening or abusing or showing physical resistance to the invigilators or any other College personnel or exhibiting insubordinate behavior inside or outside the examination hall	The particular examination taken by the candidate & the examinations taken prior to the date of malpractice stand cancelled and he / she will not be permitted to write the rest of the examinations, if any, in that semester. Also he/she will be debarred from writing the next semester examinations that follow, including supplementary / additional subject of examinations. Though the above penalties are stipulated for various malpractice cases, it is left to the discretion of the Examination Committee to affirm, reduce and enhance the penalty depending upon the nature of malpractice.
5. Candidates are writing unwanted content in their answer scripts that is unrelated to the subject matter.	It will be treated as malpractice, and the answer script will not be corrected.

## 11. TEACHING STAFF (UN AIDED)

Dr. G. Venkadasalpathi, M.B.A., M.Phil., Ph.D., Director

Name	Designation
<b>Department of Tamil</b>	
<b>Mr.S.Thangamariappan</b> , M.A., M.Phil., SET.	Assistant Professor & Head
<b>Dr.S.Anusuyadevi</b> , M.A., M.Phil., SET., Ph.D.	Assistant Professor
<b>Dr.T.Pradeeba Devi</b> , M.A., M.Phil., Ph.D.	Assistant Professor
<b>Dr.T.Viji</b> , M.A., M.Phil., Ph.D.	Assistant Professor
<b>Dr.L.Revathi</b> , M.A., M.Phil., Ph.D.,	Assistant Professor
<b>Mr.M.Karthikraja</b> , M.A.,	Assistant Professor
<b>Department of English</b>	
<b>Dr.S.D.Selvasundari</b> , M.A.,M.Phil.,PGDELT., Ph.D.	Assistant Professor & Head
<b>Mrs.K.Jayalakshmi</b> , M.A.,M.Phil.,D.Co.op.,	Assistant Professor
<b>Dr.G.Prince Rathina Singh</b> ,M.A., B.Ed., M.Phil., Ph.D.	Assistant Professor
<b>Mr.M.Marichamy</b> , M.A., M.Phil.	Assistant Professor
<b>Dr.S.Pravinkumar</b> , M.A., B.Ed., M.Phil., Ph.D.	Assistant Professor
<b>Ms.R.Suganya</b> , M.A., M.Phil., NET.	Assistant Professor
<b>Dr.R.Saravana Selvakumar</b> , M.A., M.Phil., Ph.D.,	Assistant Professor
<b>Dr.R.Mahalakshmi</b> , M.A., B.Ed.,Ph.D.,	Assistant Professor
<b>Mrs.D.RenugaDevi</b> , M.A.,	Assistant Professor
<b>Ms.V.Sivasankari</b> , M.A.,	Assistant Professor
<b>Ms.J.Suba Ranjani</b> , M.A.,	Assistant Professor
<b>Ms.R.Akshaya</b> , M.A., B.Ed.,	Assistant Professor
<b>Ms.J.Harshana</b> , M.A.,	Assistant Professor
<b>Department of Computer Science</b>	
<b>Dr.A.Gopikannan</b> ,M.Sc., Ph.D.	Assistant Professor & Head
<b>Mrs.D.Jeyabharathi</b> , M.Sc., (CS) M.Phil.	Assistant Professor
<b>Dr.S.Suganthi</b> , MCA.,M.Phil.,M.E.,Ph.D.,NET.	Assistant Professor
<b>Mrs.S.Indira</b> , M.Sc., M.Phil.	Assistant Professor
<b>Mrs.V.Jamuna Rani</b> , M.C.A., M.Phil.,	Assistant Professor
<b>Mrs.B.Monisha</b> , M.Sc.,	Assistant Professor
<b>Mrs.P.Gangalakshmi</b> , M.Sc., M.Phil., NET.,	Assistant Professor
<b>Mrs.C.Iswarya</b> , M.C.A., M.Phil.,B.Ed.,	Assistant Professor

Name	Designation
<b><u>Department of Business Administration</u></b>	
<b>Dr.G.Venkadasalpathi</b> , M.B.A., M.Phil., Ph.D.	Director
<b>Mr.S.Sivasankar</b> , M.B.A., M.Com.,PGDHRM.	Assistant Professor & Head
<b>Dr.B.Kirubhaharan</b> , M.B.A., M.Com.,PGDHRM.,Ph.D.,	Assistant Professor
<b>Dr.S.Umamaheswari</b> , B.E., M.B.A., Ph.D.	Assistant Professor
<b>Mrs.M.Sumaiya</b> , M.Com(CA)., M.Phil.,	Assistant Professor
<b><u>Department of Electronics</u></b>	
<b>Mr.S.Sankar Ganesh</b> , M.Sc., M.Phil.	Assistant Professor & Head
<b>Ms.G.Jeyapriya</b> , B.E., (ECE)	Assistant Professor
<b>Mr.V.Sivaramasubbu</b> , M.Sc., M.Phil.	Assistant Professor
<b>Mr.H.Radha Krishnan</b> , M.Sc., M.Phil., M.Tech.,	Assistant Professor
<b>Mrs.S.Shenbagavalli</b> , B.E., (ECE)	Assistant Professor
<b><u>Department of Costume Design &amp; Fashion</u></b>	
<b>Mr.S.Thangamuneeswaran</b> , M.Sc., (T&FD).	Assistant Professor & Head(i/c)
<b>Mrs.S.Gowsalya</b> , M.Sc., (T&C)	Assistant Professor
<b>Ms.S.Gopika</b> , M.Sc., (T&C)	Assistant Professor
<b>Mrs.K.Vijayalakshmi</b> , M.Sc., (T&FD)	Assistant Professor
<b><u>Department of Information Technology</u></b>	
<b>Dr.R.Veeralakshmi</b> , M.Sc., M.Phil., Ph.D.	Assistant Professor & Head
<b>Mrs.P.Krishnaveni</b> , M.C.A., B.Ed., M.Phil.	Assistant Professor
<b>Mrs.V.Selvarani</b> , M.Sc., M.Phil.	Assistant Professor
<b>Mrs.M.Nidyanandam</b> , M.C.A., M.Phil.	Assistant Professor
<b>Mrs.N.Gowri</b> , M.C.A., B.Ed.,	Assistant Professor
<b>Mr.K.Manikandan</b> , M.SC., (IT)	Assistant Professor
<b>Mrs.V.Subathra</b> , M.C.A.,	Assistant Professor
<b><u>PG &amp; Research Department of Commerce</u></b>	
<b>Mr.S.Palanikumar</b> , M.Com., M.Phil., SET.,	Assistant Professor & Head(i/c)
<b>Dr.J.Anand</b> , M.Com(CA).,M.Phil.,Ph.D.	Assistant Professor
<b>Dr.M.Vairavan</b> , M.Com., M.Phil.,PGDCA., Ph.D.	Assistant Professor
<b>Dr.R.Kavitha</b> , M.Com., MBA.,M.Phil.,Ph.D.	Assistant Professor
<b>Dr.S.Prabhakar</b> , M.Com., M.Phil., PGDCA., Ph.D.	Assistant Professor
<b>Dr.R.Subha Ranjani</b> , M.Com.,M.Phil.,	Assistant Professor
<b>Dr.V.Amutha</b> , M.Com.,B.Ed., M.Phil., Ph.D.,	Assistant Professor

Students who earn attendance between **55% and 64%** are not eligible to appear for the current semester examinations. However, they can write arrear courses, if any. They are permitted to continue their studies in the next semester; while continuing in the next semester, they have to earn combined attendance of **75%** or more by taking the average of the attendance earned in the current and the previous semester.

These candidates are eligible to write previous semester subjects along with the current semester courses. Otherwise, they will not be permitted to appear for both the previous semester and current semester courses and they have to redo the program from the previous semester and in the following academic year, if vacancy is available, after obtaining the approval from the Manonmaniam Sundaranar University through the Principal and the Head of the Department concerned.

Candidates who earn attendance **below 55%** are not eligible to write the examination in the current semester subjects and also have to discontinue the course and re-join in the same semester in the next academic year, if vacancy is available, with proper approval from the Manonmaniam Sundaranar University through the Principal and the Head of the Department concerned. These candidates are eligible to write arrear subjects, if any.

A candidate who has secured **less than 65%** of attendance in the final semester has to compensate his/her attendance shortage in a manner to be decided by the Head of the Department concerned and the Principal, after re-joining the course.

**Disciplinary Action on Malpractice in Examination:**

Student shall not indulge in any form of malpractice during C.I.A., Model, Practical and End Semester Examinations.



**End Semester Examinations are conducted twice in a year**  
**Odd Semester – November**  
**Even Semester–April**

✍ Students must mandatorily apply for all courses of the current semester and can select courses of reappearance, if any, from previous semesters and pay the fee applicable.

✍ Students must apply for the End Semester Examinations and pay the prescribed fee well in advance to enable the O/o CoE to plan and put in place the logistics required.

✍ Students who don't pay the fee before the last date for payment of fee would not be able to write the End Semester Examination.

✍ Students will have the option of writing the End Semester Examination in the Syllabus regulation of period of study for a maximum of THREE years only after the completion of the programme. On expiry of three years, the students will have to take the examination in the syllabus regulation in vogue at the time of writing examination on an equivalent paper decided by the Chairman, Board of Studies.

**Attendance Requirements to Appear For Examinations (Both theory & Practical Courses)**

✍ Absent for one period in any session (forenoon or afternoon) shall be treated as absent for half a day.

✍ The monthly statement of attendance will be displayed on the Department Notice Board by the respective departments within the first five working days of the following month.

✍ Students should earn a minimum of 75% attendance in the current semester to become eligible to write the End Semester Examinations (ESE).

✍ Students who earn attendance less than 75% but 65% and above are not eligible to appear for the current semester examinations. However, the Principal may condone the lack of attendance of those students on the following grounds and permit them to write End Semester Examinations (ESE), after the payment of condonation fee and submission of relevant documents:

1. Major Surgery-Accident which demands a complete stand other ailments which demands intensive care.
2. The cause of the long period of absence should be informed to the Principal within a week's time and get the leave sanctioned.

Name	Designation
<b><u>Department of Commerce (Professional Accounting)</u></b>	
<b>Dr.K.Mariappan</b> , M.Com., M.Phil., PGDCAB., Ph.D.,	Assistant Professor & Head
<b>Dr.S.Manjula</b> , M.Com., M.Phil., Ph.D.	Assistant Professor
<b>Dr.T.Sreeranga Nachiyar</b> , M.Com(CA)., M.Phil., Ph.D.	Assistant Professor
<b>Mrs.R.Abinaya</b> , M.Com.,B.Ed.,NET., SET.,	Assistant Professor
<b>Mrs.T.Jeyasree Christopher</b> , B.Sc., L.L.B., DCA.,	Advocate
<b>Mr.R.Dayal Sankar</b> , C.A.,	Auditor
<b><u>Department of Statistics</u></b>	
<b>Dr.T.Saratha Devi</b> , M.Sc., M.Phil., Ph.D.	Assistant Professor & Head
<b>Mr.R.Venkateshwara</b> , M.Sc., M.Phil.	Assistant Professor
<b>Mrs.S.Mahalakshmi</b> , M.Sc., B.Ed., M.Phil., SET.	Assistant Professor
<b>Ms.T.Mareeswari</b> , M.Sc.,	Assistant Professor
<b><u>Department of Botany (PG)</u></b>	
<b>Dr.A.Kala</b> , M.Sc., Ph.D.,	Assistant Professor
<b><u>Department of BCA</u></b>	
<b>Mrs.M.Gandhimathi</b> , M.C.A., M.Phil.	Assistant Professor & Head
<b>Mrs.S.Sivasakthi</b> , M.C.A., M.Phil.	Assistant Professor
<b>Mrs.A.Rajeswari</b> , M.C.A., M.Phil.	Assistant Professor
<b>Mrs.R.Lavanya</b> , M.C.A., M.Phil.,	Assistant Professor
<b><u>Department of Commerce (Business Analytics)</u></b>	
<b>Dr.C.Muthulakshmi</b> , M.Com(CA).,M.B.A.,M.Phil.,NET.,JRF.,Ph.D	Assistant Professor & Head
<b>Dr.S.Shagira Banu</b> , M.Com., M.Phil.Ph.D.,	Assistant Professor
<b>Mr.G.Saravanan</b> , M.C.A.,	Assistant Professor
<b><u>Department of Library</u></b>	
<b>Dr.S.Gandhimathi</b> , M.Li.Sc., M.Phil., Ph.D.	Librarian



## 12. NON - TEACHING STAFF (UN AIDED)

Name	Designation
<b>Mr.E.Kannan</b> , B.Sc., (Bio-Chemistry)	OS
<b>Mr.R.Sambathkumar</b> , B.Sc., (Elect.) M.L.I.S.	Senior Asst.
<b>Mrs.S.Veeralakshmi</b> , M.L.I.Sc., M.Com., M.Phil., (Commerce)	Senior Accountant
<b>Mrs.M.Durga Jeyalakshmi</b> , MCA.,	Assistant
<b>Mrs.A.Athilakshmi</b> , M.A., (Economics)	Junior Asst.
<b>Mrs.K.Neela</b> , M.Sc., (C.S)	Junior Asst.
<b>Mr.S.Ravisankar</b> , D.ECE., M.C.A., MCSE	Senior Lab. Asst.
<b>Mr.M.Surendran</b> , B.A., English	Network Admin
<b>Mrs.S.Rohini</b> , D.T.Ed., B.A.(English)	Lab. Asst in Allied Lab
<b>Mrs.R.Bhuvaneswari</b> , M.Sc., B.Ed.,	Lab. Asst in B.C.A
<b>Ms.N.Karpaga Lakshmi</b> M.Sc.,	Lab. Asst in PG Botany
<b>Mrs.R.Maheshwari</b> , B.Sc., (CD&F)	Lab. Asst in CD&F
<b>Mrs.P.Kowsalyadevi</b> , M.Sc., B.Ed.,	Lab. Asst in CS
<b>Mr.S.Murugesan</b> B.Com., B.P.Ed	Physical Instructor
<b>Mrs.P.Vigneshwari</b> B.Com.,	Library Asst.
<b>Mr.K.Mariappan</b>	Night Watchman
<b>Mr.G.Rahul</b>	Office Asst. Cum Driver
<b>Mr.G.Pitchai</b>	Sweeper
<b>Mr.P.Balakrishnan</b>	Watchman
<b>Mr.G.Seeniraj</b>	Sweeper Cum Electrician
<b>Mr.S.Shenbaganathan</b>	Office Asst.
<b>Mr.R.Narayanamoorthi</b>	Waterman Cum Driver
<b>Mrs.C.Kaliammal</b>	Scavenger
<b>Mrs.S.Vellammal</b>	Sweeper
<b>Mr.P.Ramasamy</b>	Driver
<b>Mr.S.Mohammed</b>	Driver
<b>Mr.V.Murugesan</b>	Driver
<b>Mr.V.Ananda Kumar</b>	Driver
<b>Mr.K.Muniyasamy</b>	Security

## Model Examination & End Semester Examination

## Question Paper Pattern

Section s	Marks	K Level	Total Marks
<b>Section A</b> one mark for each correct answer (MCQ) Two questions from all the 5 units	10 x 1 = 10	K1 - 5 Questions K2 - 5 Questions	10 Marks
<b>Section B</b> (Either/or Type Questions). One question from all the 5 units/ Both options from the same unit/same level. Five Marks for each correct answer	5 x 5 = 25	K3 2 Questions K4 2 Questions K5 1 Question	25 Marks
<b>Section C</b> (Either/or Type Questions). One question from all the 5 units/ Both options from the same unit/same level. Eight Marks for each correct answer	5 x 8 = 40	K3 1 question K4 2 questions K5 2 questions	40 Marks
Total			75 Marks

## II. Course Evaluation PG Programmes:

### CIA Question Paper Pattern

Section	Marks	K Level	Total Marks
<b>Section A</b> (3 +3 = 6 Questions) one mark for each correct answer (MCQ)	6 x 1 = 6	K1 & K2 (3 +3 = 6 Questions)	6 Marks
<b>Section B</b> (Either/or Type Questions) Both options of same level. Five marks for each correct answer	4 x 5 = 20	K3 -2 Questions K4- 2 questions	20 Marks
<b>Section C</b> (Internal choice Either/or Type Questions) Both options of same level. Eight marks for each correct answer	3 x 8 = 24	K5- 2 questions K6-1 question	24 Marks
Total			50 Marks

### End Semester Examination & Model Exam Question Paper Pattern

Section	Marks	K Level	Total Marks
<b>Section A</b> one mark for each correct answer (MCQ) Two questions from all the 5 units	10 x 1 = 10	K1 - 5 Questions (Q.No. 1,3,5,7,9) K2 - 5 Questions (Q.No. 2,4,6,8,10)	10 Marks
<b>Section B</b> (Either/or Type Questions). One question from all the 5 units/ Both options from the same unit/same level. Five Marks for each correct answer	5 x 5 = 25	K2 2 Questions K3 2 Questions K4 1 Question	25 Marks
<b>Section C</b> (Either/or Type Questions). One question from all the 5 units/ Both options from the same unit/same level. Eight Marks for each correct answer	5 x 8 = 40	K4 1 questions K5 3 questions K6 1 questions (K6 Compulsory)	40 Marks
Total			75 Marks

## CONTINUOUS INTERNAL ASSESSMENT (CIA):

The Continuous Internal Assessment shall comprise the following

### Components

Assessment Type	Nature of Test		Maximum Marks	Internal Assessment
Internal	Written Test - I		50 (Reduced to 20)	20 Marks
Internal	Written Test - II (Model Exam)		75 (Reduced to 20)	
Other Components	Seminar/ Assignment/ Article Review/ Paper Presentation	Student must complete at least one of the given components twice in each semester	2	2 Marks
	Written Quiz		2	2 Marks
Attendance (for only those who have 80-100% attendance)	-		1	1 Mark
Total				25 Marks

### Split - ups for K level and Other Components :

Component	UG Knowledge Level	PG Knowledge Level
Assignment	K3 & K4	K4 & K5
Seminar	K2	K3
Quiz	K1	K1

#### I. Course Evaluation for UG Programmes:

##### CIA Question Paper Pattern

Section s	Marks	K Level	Total Marks
<b>Section A</b> (3 +3 = 6 Questions) one mark for each correct answer (MCQ)	6 x 1 = 6	K1 & K2	6 Marks
<b>Section B</b> (Either/or Type Questions) Both options of same level. Five Marks for each correct answer	4 x 5 = 20	K3 -2 Questions K4- 2 questions	20 Marks
<b>Section C</b> (Internal choice Either/or Type Questions) Both options of same level Eight Marks for each correct answer.	3 x 8 = 24	K4- 2 questions K5- 1 questions	24 Marks
Total			50 Marks

## 13. Statutory Bodies

### Governing Body

SL. NO.	CATEGORY	NAME OF THE MEMBER	DESIGNATION & ADDRESS
1	Chair Person	Sri.S.Pathy	President,College Committee, Chairman & Managing Director, The Lakshmi Mills Company Ltd. Coimbatore 641 037.
2.	Management Nominee	Sri.R. Gopinath	411, Manchester Regent, Avinashi Road, Coimbatore 641 037
3.	Management Nominee	Sri. Sanjay Jayavarthanavelu	Chairman & Managing Director, Lakshmi Machine Works Ltd, 34A, Kamarajar Road, Coimbatore - 641 018.
4.	Management Nominee	Sri. Aditya Krishna Pathy	Dy. Managing Director, The Lakshmi Mills Company Ltd. Coimbatore - 641 037
5.	Management Nominee	Sri. S. Balachandran	Secretary, The Kuppusamy Naidu Charity Trust for Education and Medical Relief, Coimbatore - 641 018
6.	Management Nominee	Dr.P. Mahendran, Ph.D.,	Secretary, G.Venkataswamy Naidu College, Kovilpatti - 628 502.
7.	Educationist	Dr. A.K.Kumaraguru, Ph.D.,	Vice Chancellor NICHE, Kumarakovil, Thuckalay Tamilnadu, 629 180.
8.	Industrialist	Dr.R. Srinivasan, Ph.D.,	Member Secretary, Tamilnadu State Council for Science & Technology, Sardar PatelRoad, Chennai - 600 025.
9.	UGC Nominee	Prof. Kaladhar Arya, Ph.D.,	Director, UGC-HRDC Saurashtra University, Rajkot - 380 005.
10.	State Government Nominee	Regional Director of Collegiate Education	O/o. Regional Joint Directorate of Collegiate of Education, Tirunelveli. 627 012
11.	University Nominee	Dr.P. Ravichandran, Ph.D.,	Professor, Department of Plant Science, Manonmaniam Sundaranar University, Tirunelveli. 627 012.
12.	Ex-Officio	Dr. M.Subbulakshmi, Ph.D.,	Principal i/c.and HOD, Mathematics, G. Venkataswamy Naidu College, Kovilpatti, 628 502.
13.	Senior Most Teacher:1	Dr.A.Pandiarani,Ph.D.,	Associate Professor of Mathematics, G. Venkataswamy Naidu College, Kovilpatti, 628 502.
14.	Senior Most Teacher:2	Dr.B.Umadevi,Ph.D.,	Associate Professor of Chemistry, G.Venkataswamy Naidu Colege, Kovilpatti, 628 502.
15.	Member Secretary	Dr. B.Makesh Kumar, Ph.D.,	HOD, Dept.of Botany & Controller of Examinations, G. Venkataswamy Naidu Colege,Kovilpatti, 628 502.

## Academic Council

SL. NO.	Name Designation & Address	Category
1	Dr. M. Subbulakshmi, Principal i/c G. Venkataswamy Naidu College, Kovilpatti - 628502.	Principal i/c and Chairperson
2.	Dr. B. Revathi Professor Department of Commerce Manonmanium Sundaranar University Abishekapatti - 627 012 Tirunelveli Dt.	University Nominee
3	Dr. B. William Dharma Raja Professor Department of Education Manonmaniumsundaranar University Abishekapatti - 627 012 Tirunelveli Dt.	University Nominee
4	Dr. G. Balasubramania Raja Professor, Department of Communication, Manonmaniumsundaranar University Abishekapatti - 627 012 Tirunelveli Dt.	University Nominee
5	Prof.(Major) P. Chandra Sekaran Director Sri Sarada College of Education for Women Tirunelveli .	Member (Education)
6	Dr. R.Sampath Kumar Managing Director M/S Kamala Speciality Hopital Pvt. Limited, Kovilpatti	Member (Medicine)
7	Mr. R. Karuppasamy Rose Match Factory M.D Puthukiramamm, Kovilpatti.	Member (Industry)
8	CA.T.M. Uduman All Auditor 273-C, Main Road Kovilpatti.	Member (Commerce)
9	Dr. B. Umadevi Associate Professor & Head Department of Chemistry.	Convener Curriculum Development Cell
10	All the Heads of the Departments	Members
11	Mr. R. Venkatesan Associate Professor of Chemistry.	Senior Teacher
12	Dr. V. Gomathi Sankareswari Associate Professor of Chemistry.	Senior Teacher
13	Mr. S. Palanikumar Assistant Professor of B.B.A.	Senior Teacher
14	Dr. R. Saravana Selvakumar Assistant Professor of English.	Member Secretary

outcomes for programmes and courses and then align them with teaching learning and assessment processes. Bloom's Taxonomy has been used as the basis for setting learning outcomes, teaching methods, and student assessments.

### EXAMINATIONS

#### CONDUCT OF EXAMINATIONS

The Office of the Controller of Examination shall conduct End Semester Examination (ESE) comprising Practical, Online and Comprehensive Examinations. The college follows 25 : 75 pattern for UG & PG (25 Marks for Continuous Internal assessment (CIA) and 75 Marks for End Semester Examinations (ESE).

#### Examination Process:

The CIA shall be conducted during semester and ESE shall be conducted at the end of each Semester.

CIA	Portion	After	Marks	Time	Total Marks
I	Unit I, II and III (Half Unit)	45th Working Day	50	2hours	Converted to 20 Marks
II (Model Exam)	All five Units	80th Working Day	75	3hours	

ESE	Portion	After	Marks	Time
I	All five units	90 <sup>th</sup> Working Day	75	3 Hours

### 16.15. Vehicle rules

- (i) Students should ensure that they park their two / four-wheelers properly and systematically. Parking shall be done only at the specified parking area indicated by the college.
- (ii) Wearing helmets and following traffic rules is necessary for safety.
- (iii) Students should have a valid driving license and submit a photocopy to the office.
- (iv) If a student is found driving rashly / carrying an excess number of students, they will face disciplinary action. All students shall look at themselves with pride and a sense of belonging to the family of G.V.N College. The students maintain the decorum of the college, thus making themselves good members of the team and society and proving to us valuable citizens of the country.

### CURRICULUM

#### Choice Based Credit System (CBCS)

Higher education in India is going through a phase of rapid expansion, competing with national and international standards. Under the impact of globalization a need for reforming the higher education system in - line with the needs and expectations of society has been felt necessary. In response to this trend, the institution has introduced the Choice Based Credit System (CBCS) for students admitted to various programs from the academic year 2020-21 and onwards.

#### Outcome Based Education

The OBE Curriculum at both the UG and PG levels is designed based on the Outcome-Based Education (OBE) approach. The central aspect of OBE is to set measurable learning

### Result Passing Committee

SL. NO.	Name Designation & Address	Category
1	Dr. M. Subbulakshmi, Principal i/c G. Venkataswamy Naidu College, Kovilpatti, 628502	Chairperson
2.	Dr. V. Samuel Gnana Prakash Professor Centre for Marine Science Technology Manonmanium Sundaranar University Rajakamangalam Kanyakumari Dt.	University Nominee
3	Dr. A. Suruliandi Professor Department of Computer Science & Engineering Manonmanium Sundaranar University Abishekapatti - 627 012 Tirunelveli Dt.	University Nominee
4	Dr. B. Makesh Kumar Head of Dept. of Botany G. Venkataswamy Naidu College, Kovilpatti-628 502.	Controller of Examination
5	Dr.G.Venkadasalpathi Director G. Venkataswamy Naidu College, Kovilpatti-628 502.	Senior Teacher
6	Heads of all the Departments	Members

### Finance Committee

SL. NO.	Name Designation & Address	Category
1	Dr. M.Subbulakshmi, Principal i/c, G. Venkataswamy Naidu College, Kovilpatti, 628502	Chairperson
2.	Dr.B. Umadevi Associate Professor of Chemistry G. Venkataswamy Naidu College.	Member
3	Dr. B. Makesh Kumar Associate Professor of Botany & Controller Examinations G. Venkataswamy Naidu College.	Member
4	Mrs. R. Maheswari Office Superintendent / Finance Officer G. Venkataswamy Naidu College.	Member Secretary

## 14. CONVENORS OF VARIOUS COMMITTEE

### Co-ordinators

Dr. M.Subbulakshmi, Principal In-charge (Aided)

Dr. G. Venkadasalpathi, Director (Un Aided)

Sl. No	STAFF COUNCIL	
1.	Aided	
	Chairman	Dr.M.Subbulakshmi, Principal i/c
	Members	Dr.A.Pandiarani Dr.B.Uma Devi Dr.P.Chithralekha Dr.B.Makesh Kumar Dr.T.Kothaiammal Dr.A.Revathi Mr.R. Venkatesan (Staff Ref) Mrs.R.Maheshwari Dr.M.Sankareswari Mr. P.Muthuselvam
2.	ADMISSION COMMITTEE	
	Aided	
	Convener	Dr.M.Subbulakshmi
	Members	Dr.A.Pandiarani Dr.B.Uma Devi Mr.R.Venkatesan Mr.N.Ramamorthy
3.	DISCIPLINE COMMITTEE	
	Aided	
	Chairman	Dr.M.Subbulakshmi
	Members	Dr.A.Pandiarani Dr.B.Uma Devi Dr.P.Chithralekha Dr.B.Makesh Kumar Dr.A.Revathi Dr.T.Kotahaiammal
4.	COLLEGE UGC LIASON COMMITTEE	
	Aided	
	Convener	Dr.M.Subbulakshmi
	Members	Dr.B.Makesh Kumar Mrs.R.Maheswari

- (iv) Students should refrain from sub-lending the library books to any person.
- (v) Students should not write, underline, or make any marking in the Library book or cause any damage.
- (vi) Students who receive books should examine them and report any damage to the librarian. If they fail to do so, they will be held responsible for any damage that may be detected afterwards.
- (vii) All borrowed books must be returned within 15 days from the issue date. Books can be renewed and provided if no other student requires them. For renewal, the book must be presented to the librarian for inspection.
- (viii) If the borrowed book is not returned on the due date, an over- due charge of Rupee 1/- (one) per day will be collected. For overdue charges, intervening holidays will also be included.
- (ix) If a book is lost or damaged, the librarian should be promptly notified, and the student will be charged the cost of the book.
- (x) Transfer and Conduct Certificates will be issued to students only after they produce a "NO DUES" Certificate.

### 16.14. College Bus Discipline

- (i) The female students travelling by college bus should always have their bus pass and college identity card with them.
- (ii) The students travelling by college bus must pay their bus fee on or before the date specified by the institution.
- (iii) The boarding point of every student must be mentioned in the office at the time of bus fee payment, and if there are changes in the boarding point, they should be informed to the office beforehand.
- (iv) Students should not reserve seats on the bus for their friends.
- (v) Students should maintain discipline inside the bus. In the case of Indiscipline, severe action will be taken.



- (x) Students who leave or return to the college campus during class hours may do so only after getting permission from the principal or director.

### 16.12. Classroom Discipline and Conduct

- (i) Students are expected to follow the classroom decorum.
- (ii) Students are expected to be in the classroom for the lectures before the faculty arrives
- (iii) Assignments and projects should be the student's original work. Students are expected to be punctual and should try to submit their assignments on time
- (iv) Fans, lights, and other electrical devices should be switched off after the lecture is over. Students are expected to cooperate.
- (v) Students should be regular and punctual in attending all classes. They must have 75% attendance to appear for the semester examination.
- (vi) Students who fall sick during classes may be permitted to go home only after their parents or guardians have been informed.
- (vii) Boys and girls should not interact unusually on the college premises. They should also not exchange contact numbers, notes, books, food, etc. Violation of this will result in the student's expulsion from the college.
- (viii) Celebrations of birthdays, applying colour powder to others, lighting crackers, etc., are strictly forbidden on the college premises.

### 16.13. Library Discipline

- (i) The library is open from 9.30 a.m. to 5.00 p.m. on all working days.
- (ii) Students can borrow a maximum of four books for UG programmes and Six books for PG programmes, respectively.
- (iii) Absolute silence should be maintained in the library.

5.	HAND BOOK & CALENDER	
	Aided	Un Aided
	Convener : A.Pandiarani Members : Mr.P.Muthuselvam Mrs.R.Maheswari	Convener : Mr.H.Radha krishnan Members : Dr.M.Vairavan Dr.R.Saravana Selvakumar Mrs.S.Shenbagavalli
6.	TIME TABLE COMMITTEE	
	Aided	
	Convener	Dr.R.Krishnaveni
	Members	Mr.G.Angumalar
7.	RESEARCH & DEVELOPMENT CELL	
	Aided	Un Aided
	Convener : Dr.R.Lakshmanan Members : Dr.N.Shunmugapriya Dr. M. Sankareswari	Convener : Dr.S.Suganthi Members : Dr.T.SarathaDevi Dr.G.Prince Rathina Singh Dr.M.Vairavan Dr.R.Saravana Selvakumar Dr.A.GopiKannan
8.	ALUMINI ASSOCIATION	
	Aided	Un Aided
	Convener : Mrs.R.Kavithamanju Members : Dr.B.Uma Devi Dr.S.Bala Mr.G.Angumalar Dr.S.Vinayashree	Convener : Mrs.S.Sivasakthi Members : Dr.R.Subha Ranjani Dr.R.Mahalakshmi Mrs.V.Jamuna Rani Mr.G.Saravanan
9.	PARENT TEACHER ASSOCIATION	
	Aided	Un Aided
	Convener : Dr.V.GomathiSankareswari Members : Dr.M.Sankareswari Mrs.A. Benitta	Convener : Mr.S.Palanikumar Members : Mrs.V.Selvarani Dr.R.Kavitha Dr.T.Pradeeba Devi Mrs.S.Indira Mrs.V.Subathra Ms.S.Gopika

10.	N.S.S. & BLOOD DONORS CLUB	
	Aided	Un Aided
	Convener (Unit 51): Mr.P. Muthuselvam Members : Mr. S. Jayakurumban Ms.S.Geetha  Convener (Unit 52) : Mrs. K.Renukadevi Members : Dr.A.Revathi Dr.M.Sivakavinesan	Convener (Unit 180) : Mr.M.Marichamy Members : Dr.M.Vairavan Dr.S.Umamaheswari Dr.T.Viji Ms.V.Sivasankari Ms.T.Mareeswari Mrs.R.Lavanya Mr.G.Saravanan Dr.L.Revathi
11.	NSS ADVISORY COMMITTEE	
	Convener	Dr.M.Subbulakshmi
	Members	Mr. P. Muthuselvam (Unit - 51) Mrs.K.Renukadevi (Unit - 52) Mr. M.Marichamy (Unit - 180)
12.	SPORTS COMMITTEE	
	Aided	Un Aided
	Chairman : Dr.T.Kothaiammal Convener : Dr.M.Subbulakshmi Members : Dr.A.Pandiarani Mrs.R.Maheswari	Convener : Mr.S.Murugesan Members : Mr.S.Thangamariappan Mrs.K.Jayalakshmi Mr.S.Sivasankar Dr.R.Subha Ranjani Mr.K.Manikandan Mr.M.Karthikraja
13.	COUNSELLING, CAREER GUIDANCE & PLACEMENT CELL	
	Aided	Un Aided
	Convener : Mr.K.Velmurugan Members : Dr.K.Marichamy Mr.E.Selvakumar Dr.M.Sivakavinesan Dr.H.M.SulthanAkthar	Convener : Dr. B. Kirubhakaran Members : Mrs.S.Sivasakthi Mrs.N.Gowri Dr.T.Sreeranga Nachiyar Ms.R.Suganya Dr.J.Anand Mr.S.Thangamuneeswaran Mr.R.Venkateshwara Mrs.S.Indira Dr.S.Prabhakar

- (iv) Dedication to the work allotted, Devotion to the studies, and Discipline in routine life are the three traits a student must develop
- (v) The following are considered Violations of discipline / misconduct.
- ✗ Indulging in revolutionary or inter disciplinary activities such as damaging the fitments & equipment in rooms/ corridors/ toilets/ commonrooms/ classrooms/ laboratories.
  - ✗ Possession of a cell phone inside the campus is banned. In the case of defaulters, either the cell phone will be seized, or they will be fined and suspended for 30 days.
  - ✗ Showing disregard for rules, regulations, and notices displayed/promulgated from time to time.
  - ✗ Failing to use proper form for college out pass.
  - ✗ Failing to keep newspapers/magazines properly after reading in the Library.
  - ✗ Failing to adhere to college timing.
  - ✗ Failing to attend special classes as per the timetable.
  - ✗ Failing to pay college fees/fines/other charges within the stipulated time.
  - ✗ Failing to follow safety measures in the laboratories.
- (vi) Smoking and alcohol intake are strictly prohibited. Any student found violating this **will be dismissed** from the college.
- (vii) Boys should not enter the places reserved/allotted to the girls, such as the classroom, laboratory, library, seminar hall, canteen, common hall, etc.
- (viii) Students are advised not to bring valuable things such as ornaments, cash, electronic gadgets, etc.
- (ix) Students should not bring anyone other than parents / guardians into the campus without prior permission.



- ✍ Boys must maintain a neat appearance; informal or colored hair and sporting beards are prohibited.
- ✍ Girls are expected to dress decently. Girls can wear only sarees or salwar suits with a Shawl (pinned V-shaped) to go to college.
- ✍ Out of respect for Indian traditions, students should avoid wearing tight, transparent, sleeveless, or revealing clothes and should dress appropriately.
- ✍ Jeans, half sarees, tight-fitting t-shirts, see-through clothes, sleeveless tops, and leggings are banned on the college campus.

### 16.9. Identity card

Every admitted student will receive an identity card duly attested by the Principal. They should wear the identity card till they present on campus. Students can only attend the classes if they wear the identity card. If Id-Card is lost, the student should report the same immediately to the college office, and get a duplicate without delay paying the fees due for a duplicate card.

### 16.10. Attendance and Leave Particulars

The college planner mentions that all students should attend classes on all working days. As per the university norms, a student is eligible to appear for the semester examination only if they have secured 75% attendance in theory and practical classes. While taking leave, students should collect their leave application form from the students' store and then get it duly signed by the parent, class in charge, and the Principal / Director.

### 16.11. Campus Discipline

- (i) Every student's moral responsibility is to maintain the campus's dignity, decency, and decorum.
- (ii) Students must maintain good conduct by abiding the rules and regulations of the institution.
- (iii) Students being found as defaulters will be suspended from the college, and their parents will be informed to withdraw the student from the college or the name will be struck off the roll

Sl. No.	CAREER GUIDANCE & PLACEMENT CELL	
	Mr.H.Radha krishnan Dr.S.Shagira Banu Mrs.Sumaiya Ms.R.Akshaya	
14.	ADVISORY COMMITTEE FOR LIBRARY	
	Aided	Un Aided
	Convener : Dr.E.Sucila Members : Dr.S.Bala Ms.B.Essakiammal @ Shanmugam	Convener : Dr.S.Gandhimathi Members : Ms.G.Jeyapriya Dr.S.Anusuyadevi Ms. T.Mareeswari Dr.S.Suganthi Ms.J.SubaRanjani Ms.K.Monisha
15.	NATURE CLUB	
	Aided	Un Aided
	Convener : Dr.K.Marisamy Members : Dr.T.AmudhaPriya Dr.A.Kala Dr.R.A.Sonia	Convener : Ms.G.Jeyapriya Members : Dr.K.Mariappan Dr.R.Subha Ranjani Mrs.V.Jamuna Rani Mrs.D.RenugaDevi
16.	QUIZ CLUB	
	Aided	Un Aided
	Convener: Dr.P.Chithralekha Members : Mr.G. Angumalar Ms.S. Devadharsini Mrs.D. Rani	Convener: Mrs.A.Rajeswari Members : Dr.S.Gandhimathi Dr.V.Amutha Mrs.S.Gowsalya Ms.J.Harshana
17.	FINE ARTS CLUB	
	Aided	Un Aided
	Convener : Ms.R. Kavitha Manju Members : Dr.N.Shunmugapriya Dr.S.Vinayashree Ms.S.Geetha Ms.J.Afnan Ms.N. Ashokkumar Dr. M. Sivakavinesan Dr. T. Amudhapriya	Convener : Mr.V.Sivaramasubbu Members : Mr.S.Thangamariappan Dr.R.Kavitha Dr.R.Saravana Selvakumar Mrs.S.Mahalakshmi Dr.R.Mahalakshmi Mrs.V.Subathra Dr.T.Viji Mrs.R.Lavanya Ms.J.Harshana

18.	CAMPUS AMENITIES COMMITTEE	
	Aided	
	Convener	Mrs.R.Kavithamanju
	Members	Mr.K.Velmurugan
19.	HEALTH CLUB	
	Aided	
	Convener	Dr.R. Soina
	Members	Dr.T.AmudhaPriya, Dr.A.Kala
20.	STUDENTS GRIEVANCES	
	Aided	Un Aided
	Convener : Dr.R.Krishnaveni	Convener : Dr.T.Saratha Devi
	Members : Mrs.A.KavithaManju	Members : Dr.R.Veeralakshmi
	Dr.A.Revathi	Dr.S.Anusuyadevi
	Dr.A.Kala	Dr. B. Kirubaharan
		Mr.V.Sivaramasubbu
		Mr.S.Murugesan
21.	YOUTH RED CROSS	
	Aided	Un Aided
	Convener : Dr.N.ShunmugaPriya	Convener : Dr.K.Mariappan
	Members : Mrs.S.Maheswari	Members : Mrs.K.Jayalakshmi
	Mrs.D. Rani	Dr.S.Manjula
		Dr.S.Prabhakar
		Mrs.P.Gangalakshmi
		Dr.L.Revathi
22.	YOUTH WELFARE COMMITTEE	
	Convener	Dr.M.Sankareswari
	Members	Ms.S.Devadharshini
		Dr.D. James Balgan Anand
23.	TRANSPORT, MEDIA & PUBLIC RELATIONS	
	Aided	Un Aided
	Convener : Dr.M.Sankareswari	Convener : Mr.V.Sivaramasubbu
	Members : Ms.J.Afnan	Members : Ms.T.Mareeswari
		Mrs.K.Vijayalakshmi
		Mrs.S.Veeralakshmi
		Mr.S.Murugesan

- ✍ Students found indulging in ragging junior or fellow students, whether inside the institute or outside the premises, will be liable to be RUSTICATED from the college, besides being handed over to the appropriate civil authority for action in accordance with the law.
- ✍ Whoever directly or indirectly engages in, supports, or promotes ragging will face up to two years in prison and a fine of ten thousand rupees.
- ✍ Any student convicted of an offence under section 4 shall be dismissed from the educational institution, and such student shall not be admitted to any other educational institution.
- ✍ The decision of the head of the educational institution shall be final for any student who has indulged in ragging under Sub-Section(1).

#### 16.7. Rules and Regulations

- ✍ students must read the rules and regulations carefully so as to make themselves familiar with the norms followed in the institution. In case of any clarification, the students should consult the respective class coordinator/HOD. They should also follow the instructions issued from time to time by the competent authorities. The ignorance of rules and regulations shall not be an excuse for any breach of discipline.

#### 16.8. Dress code

- ✍ Students should attend college in formal attire, adhering to the dress code stipulated by the college.
- ✍ Boys should come to college wearing full pants and a formal shirt, which must be fully buttoned except for the collar button.
- ✍ Boys should avoid wearing T-shirts, shirts with logos and letters, jeans, kurtha, hats, or caps.

#### 16.4. Placement and Career Guidance Programme

- ✍ Experts and eminent persons in their study area periodically address I and II Year students.
- ✍ Students were guided to prepare their customized resumes, and they were assisted in achieving their career goals.
- ✍ Prospective employers are invited for campus recruitment.
- ✍ Outgoing students can also avail themselves of career guidance services whenever necessary.

#### 16.5. Value Added Courses and Skill oriented courses

In this knowledge-blooming era, it is essential for youngsters to possess both core and interdisciplinary expertise. To fulfill this aspiration, various departments conduct Add-on Courses for all undergraduate students. These courses are designed to enable students to:

- ✍ Acquire specialized skills that complement their major subjects.
- ✍ Cope with the emerging trends of the competitive job market.
- ✍ Enhance their employability by gaining knowledge in diverse fields.
- ✍ Stay updated with the latest trends and advancements in different areas.
- ✍ Develop communication skills.
- ✍ Foster critical thinking and problem-solving abilities through practical applications.
- ✍ Equip themselves with the necessary tools to succeed in a competitive global environment.

#### 16.6. Ragging and its consequences

- ✍ According to ACT No.7 of 1997 of the Tamil Nadu Prohibition of Ragging Act, ragging in educational institutions in the State of Tamil Nadu is prohibited.

24.	CONSUMER CLUB	
	Convener	Dr.S.Vinayashree
	Members	Ms. S.Geetha Mrs. J.Jenifer
25.	WEBSITE UPDATION	
	Aided	UnAided
	Convener : Dr.N.Shunmugapriya	Convener : Mrs.P.Krishnaveni
	Members : Mrs.S.Maheswari	Members : Mrs.A.Rajeswari Mrs.M.Nidhyandam Mrs.N.Gowri Mr.K.Manikandan Mrs.P.Gangalakshmi Mrs.R.Bhuvanewari (BCA LAB)
26.	YOGA CLUB	
	Convener	Dr.T.Kothaiammal
	Members	Dr.T.AmudhaPriya Ms.B.Esakkiammal@Shanmugam Dr.R.Sonia
27.	DISABILITY RESOURCE CENTRE	
	Convener	Dr.A.Pandiarani
	Members	Mrs.K.Renukadevi
28.	ELECTROL LITERACY CLUB	
	Convener	Mr.G.Angumalar
	Members	Mr.P. Muthuselvam Dr.H.M. Sulthan Akthar

29.	GVN TIMES, ANNUAL MAGAZINE & LIMEX	
	Aided	Un Aided
	Convener : Mr.G.Angumalar Member : Dr.H.M.SulthanAkthar Mr.N.Ashokkumar	Convener : Dr.A.Gopikannan Member : Mrs.A.Rajeswari Dr.T.Pradeepa Devi Dr.S.D.Selvasundari Mrs.B.Monisha Ms.R.Akshaya <b>(LIMEX)</b> Convener : Mr.S.Sankar Ganesh Member : Mr.S.Palanikumar Mrs.D.RenugaDevi
30.	NATIONAL DIGITAL LIBRARY	
	Convener	Dr.S.Bala
31.	ENTREPRENUER DEVELOPMENT CELL	
	Aided	Un Aided
	Convener : Dr.A.Revathi Members : Dr.S.Vinayashree Ms.B.Esakkiammal @ Shanmugam	Convener : Dr.C.Muthulakshmi Members : Dr.S.Manjula Dr.S.Prabhakar Mr.M.Marichamy Dr.S.Shagira Banu Dr.L.Revathi Ms.C.Iswarya
32.	OUTCOME BASED EDUCATION CELL	
	Aided	Un Aided
	Convener	Dr. S.D.Selvasundari
	Members Dr.R.Krishnaveni Dr.A.Revathi Dr.M.Sankareswari Mr. P. Muthuselvam Dr.A.Kala Dr.D.James Balgan Anand	Dr.T.Saradha Devi Mrs.M.Nidhyanandam Dr.C.Muthulakshmi Dr.T.Sreeranga Nachiyar Mr.H.Radha krishnan Dr.S.Umamaheswari Dr.V.Amutha Mrs.D.RenugaDevi Mrs.R.Lavanya Ms.S.Gopika Ms.C.Iswarya

- ✍ Computer Labs are equipped with the latest technology/hardware/software.
- ✍ Modernized digital Language Laboratory to improve every student's communication skills.
- ✍ MOOC / Swayam - NPTEL / Spoken Tutorial courses offered to students.
- ✍ Air-Conditioned Seminar Hall.
- ✍ Public Address System for all classrooms.
- ✍ Post office facility.
- ✍ Separate two-wheeler & four-wheeler parking sheds for staff and students.
- ✍ CCTV Surveillance cameras are installed everywhere on the campus.

### 16.3. Teaching Methodology

- ✍ A comprehensive scheme of lesson plans is meticulously prepared prior to the commencement of classes.
- ✍ Classroom instruction is enhanced through the integration of ICT (Information Communication Technology) facilities, ensuring an engaging and modern learning experience.
- ✍ Study materials are provided to students in the form of printed handouts, facilitating easy reference and thorough understanding.
- ✍ Regular reviews of students' progress are conducted to monitor and support their academic development.
- ✍ Detailed student assessment records are maintained for each subject, ensuring a clear track of individual performance and areas needing improvement.
- ✍ A robust mentoring system is in place, wherein faculty members provide personalized guidance and support to students, fostering their academic and personal growth.

## 16. General Information

### 16.1. College Timing

#### WORKING HOURS (Aided)

STUDENTS	:10.00 a.m. To 4.00 p.m.
STAFF MEMBERS	:10.00 a.m. To 4.00 p.m.
OFFICE	:9.30 a.m. To 5.15 p.m.

#### WORKING HOURS (Unaided)

STUDENTS	:9.50 a.m. To 3.50 p.m.
STAFF MEMBERS	:9.30 a.m. To 4.20 p.m.
OFFICE	:9.15 a.m. To 4.50 p.m.

### 16.2. Infrastructural Facilities

- ✍ A 72-acre Lush green campus.
- ✍ Sri Kalvi Vinayagar Temple adds sanctity to the green panoramic campus.
- ✍ Spacious and well-aerated classrooms.
- ✍ Centralized and Department libraries for students' benefit.
- ✍ State-of-the-art laboratories.
- ✍ INFLIBNET to facilitate Research Programmes.
- ✍ A Modernized Auditorium that can accommodate about 1200 Students.
- ✍ Uninterrupted power supply.
- ✍ Canteen and students' store in the college premises.
- ✍ Separate Restrooms for Boys and Girls.
- ✍ Immediate Medical Aid Centre for Girls.
- ✍ RO Treated water facility.
- ✍ College bus facility for girls.
- ✍ Separate Air-Conditioned Computer Labs for UG, PG,& Research Programs with Broadband Internet Connection.

33.	NCC	
	Convener	Mr. S. Sivasankar
	Members	Dr. K. Marisamy
34.	CDC CELL	
	Convener	Dr.B.Umadevi
	Members	Mrs. R.Kavitha Manju Dr.R.Krishnaveni Mr. E.Selvakumar Dr. G.Prince Rathina Singh Dr.T.Saradhadevi Mrs.M.Gandhimathi Mr.S.Palanikumar Dr. K.Mariappan Mrs.P.Krishnaveni
35.	EXAMINATION COMMITTEE	
	Aided	Un Aided
	Convener Dr.E. Sucila Co-Convener Dr.R. Krishnaveni Members Mr. E. Selvakumar Mr. N.Ashokkumar Dr. T.Amuthapriya Ms.S.Devadharshini Dr.D.James Balgan Anand	Information Technology Department Staff members & Mr.R.Sambathkumar (Senior Assistant – Office)
36.	Junior Jaycee Wing	
	Un Aided	
	Convener	Dr. G.Prince Rathina Singh
	Members	Dr.S.Pravinkumar Mrs.M.Nidhyanandam Mrs.S.Gowsalya
37.	ICTACT Club	
	Convener	Mrs.M.Gandhimathi
	Members	Dr.R.Lakshmanan Dr.M.Sivakavinesan

### 14.3. WOMEN'S CELL & INTERNAL COMPLAINT COMMITTEE

Name of the Institution : G. Venkataswamy Naidu College, Kovilpatti.

Details of the Chairperson of Complaint Committee

Name : Dr. P. Chithralekha

Designation : Assistant Professor

Address : Department of Physics,

G.Venkataswamy Naidu College, Kovilpatti - 628 501.

Cell : 94431 38833 Email : chithralekha1980@gmail.com

Date of formation of the Committee : 19.06.2023 (Academic Year 2023 - 2024)

S. No.	Name of the Committee Members	Designation	Address with phone number and Email ID of the Department / Institution
1	Dr. B. Umadevi	Associate Professor & Head	Department of Chemistry G. Venkataswamy Naidu College Phone No. 93667 20833 Email Id : bu_1967@yahoo.com
2	Mrs. R. Kavitha Manju	Assistant Professor	Department of Physics G. Venkataswamy Naidu College Phone No. 97519 08884 Email Id : kavithamanju@gvncollege.edu.in
3	Dr. R. Veeralakshmi	Assistant Professor & Head	Department of Information Technology G. Venkataswamy Naidu College Phone No. 73588 97476 Email Id : Veerasanjay2011@gmail.com
4	Dr. S.D. Selvasundari	Assistant Professor & Head	Department of English G. Venkataswamy Naidu College Phone No. 96008 18745 Email Id: selvasundari@gvncollege.edu.in
5	Mrs. R. Maheswari	Office Superintendent	G. Venkataswamy Naidu College Phone No. 99409 99482 Email Id: maheswari.bharathi2@gmail.com
6	Mrs. B. Parameshwari	Co-ordinator	Reformative Action Institute (RAI) 2/22, West Street, Vallinaykipuram, Kadalaiyur Phone No. 94429 94020 Email Id: vbm.aiyf@gmail.com
7	Mrs. Jayashree Christopher	Advocate	666, Kamaraj Nagar West Manthithoppu Road, Kovilpatti. Phone No. 86102 34373 Email Id: christojoy@gmail.com
8	Ms. R.Dev Rakshantha	Student	40, Soundarapandian Street, Kovilpatti. Phone No : 90920 66226
9	Mrs. M.Selvi	Scavenger	G . Venkataswamy Naidu College Kovilpatti.

38. Digital Learning Club (Mooc / NPTEL, Spoken Tutorial)

Aided	Un Aided
Convener : Mr.E.Selvakumar Members : Mr.S.Jayakurumban Dr.M.Sivakavinesan Ms.J.Jenifer Ms.S.Devadharshini Dr.R.Sonia	Convener : Mrs.V.Selvarani Members : Mrs.M.Gandhimathi Dr.C.Muthulakshmi Ms.R.Suganya Mrs.S.Mahalakshmi Dr.T.Sreeranga Nachiyar Dr.V.Amutha Mrs.V.Subathra Mrs.S.Shenbagavalli Dr.S.Umamaheswari Mrs.P.Gangalakshmi Ms.S.Gopika

39. Ethics Committee

Chairman	Dr. M.Subbulakshmi
Convener	Dr. B.Makeesh Kumar
Members	Dr. V.GomathiSankareswari Dr. T.Kothaiammal Ms.T.Thilagavathi II M.Sc(Maths)- (Students' Chiarmen)

40. Innovation and Incubation Cell

Convener	Dr. R.Veeralakshmi
Members	Mr. S.Sankar Ganesh Mr. J.Anand Mr.S.Thangamuneeswaran Dr. S.Suganthi Mrs.R.Abinaya

41. Spiritual Club

Convener	Dr.S.Pravinkumar
Members	Mr.S.Sivasankar Mrs.P.Krishnaveni Mr.G.Saravanan Ms.J.Harshana



**14.2. ANTI RAGGING COMMITTEE  
(2024 - 2025)**

1.	Dr. M.Subbulakshmi	Principal In-charge	944244 5027
2.	Dr. V.Gomathisankareswari Associate Professor Department of Chemistry	Convenor	94431 74616
3.	Dr. B. Makes Kumar Associate Professor & HoD Department of Botany	Member	99523 44431
4.	Mrs. D. Jeyabharathi Assistant Professor Department of Computer Science	Member	99941 70596
5.	Dr. R. Veeralakshmi Assistant Professor & HOD Department of Information Technology	Member	94887 30081
6.	Mrs. R. Maheswari Office Superintendent	Member	99409 99482
7.	Mr. A.T. Rajaram Inspector of Police, West Police Station, Kovilpatti.	Member	94424 99100
8.	Mr. G. Alwarsamy Sivakumar Advocate, Kovilpatti	Member	94431 21808
9.	Mr. M. Muthuraj V.A.O., Appaneri	Member	93848 30271
10.	Mr. R. Saravana Muthu Dinamani (Correspondent)	Member	94434 63288
11.	Mr. K. Iyyadurai, Parent	Member	97876 05858
12.	Mr. Seenivasan, Parent	Member	70109 68050
13.	Mr. S. Ayyappasamy, Parent	Member	99658 51327
14.	Mr. G. Kasirajan Parent	Member	90955 77110
15.	Ms. T.Thilagavathi, Student II M.Sc. (Mathematics)	Member	96263 59539
16.	Ms. R.Kaaviya, Student III B.Com.,	Member	82482 04178

**24\*7 ANTI RAGGING HELP LINE TOLL FREE NO. 1800-180-5522**  
email: [helpline@antiragging.net](mailto:helpline@antiragging.net)

42. General Function Committee

Convener	Dr.S.Anusuyadevi
Members	Mrs.S.Sivasakthi Mr. S.Thangamuneeswaran Mrs. N.Gowri Mrs.S.Shenbagavalli Dr.R.Mahalakshmi Mrs.S.Indira Dr.T.Viji Mrs.M.Sumaiya Dr.J.Anand Dr.S.Shagirabanu Mr. R.Venkateshwara Mr.M.Karthikraja
43. Puthumai Penn & Tamil Puthalvan Scheme	
Aided	Un Aided
Convener : Dr. V. Gomathi Sankareswari Members : Mr. N. Ramamoorthy Mr. P. Ponraj	Convener : Dr. J. Ananth Members : Mr. R. Sampath Mrs. K. Neela

## 14.1. INTERNAL QUALITY ASSURANCE CELL

Email ID : [gvnqiqac@gmail.com](mailto:gvnqiqac@gmail.com)

1. Member from management : **Dr. P. Mahendran**  
Secretary
2. Chairperson : **Dr. M. Subbulakshmi**  
Principal in-charge
3. Advisors : **Dr. A. Pandiarani**  
Associate Professor of Mathematics  
**Dr. B. Umadevi**  
Head & Associate Professor of Chemistry
4. Co-ordinator : **Mr. R. Venkatesan**  
Associate Professor of Chemistry  
Cell : 70104 89954  
Email ID : [gvnrvenkatesan@gmail.com](mailto:gvnrvenkatesan@gmail.com)
5. Assistant Coordinator : **Dr. V. Ramalakshmi**  
Assistant Professor of Mathematics
6. Teaching Staff members : **Mrs. R. Kavitha Manju**  
Assistant Professor of Physics  
**Mrs. D. Jeyabharathi**  
Assistant Professor of Computer Science  
**Mr. S. Sankar Ganesh**  
Head & Assistant Professor of Electronics  
**Dr. A. Revathi**  
Head & Assistant Professor of Commerce  
**Mr. G. Angumalar**  
Assistant Professor of Physics  
**Dr. N. Shunmugapriya**  
Assistant Professor of Mathematics  
**Dr. R. Saravana Selvakumar**  
Assistant Professor of English  
**Mrs. S. Suganthi**  
Assistant Professor of Computer Science

7. Administrative staff members : **Mrs. R. Maheswari**

Office Superintendent

8. Local Society Nominee and Alumni : **Mr. I.S. Krishnasamy (Rtd)**

Head & Associate Professor of Botany,  
Alumnus

9. Employers / Industrialists : **Mr. S. Panneerselvam**

Junior Officer - Cashier  
The Lakshmi Mills Company, Kovilpatti

10. Students' Representative : **1. Ms. T. Thilagavathi**

II M.Sc., Mathematics

**2. Ms. R. Kaaviya**

III B.Com.,



**“Education is the manifestation of the perfection  
already in man.”**